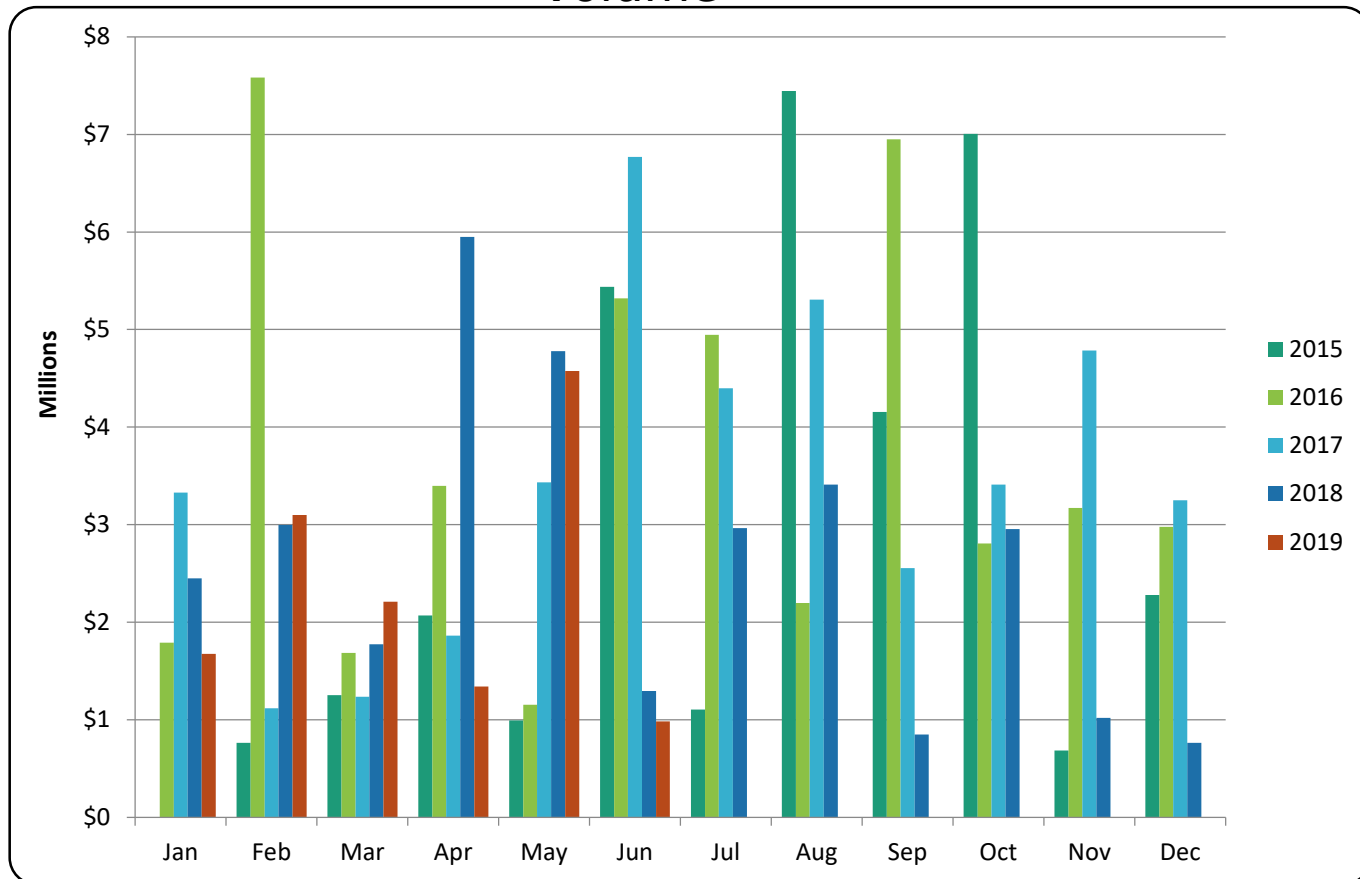
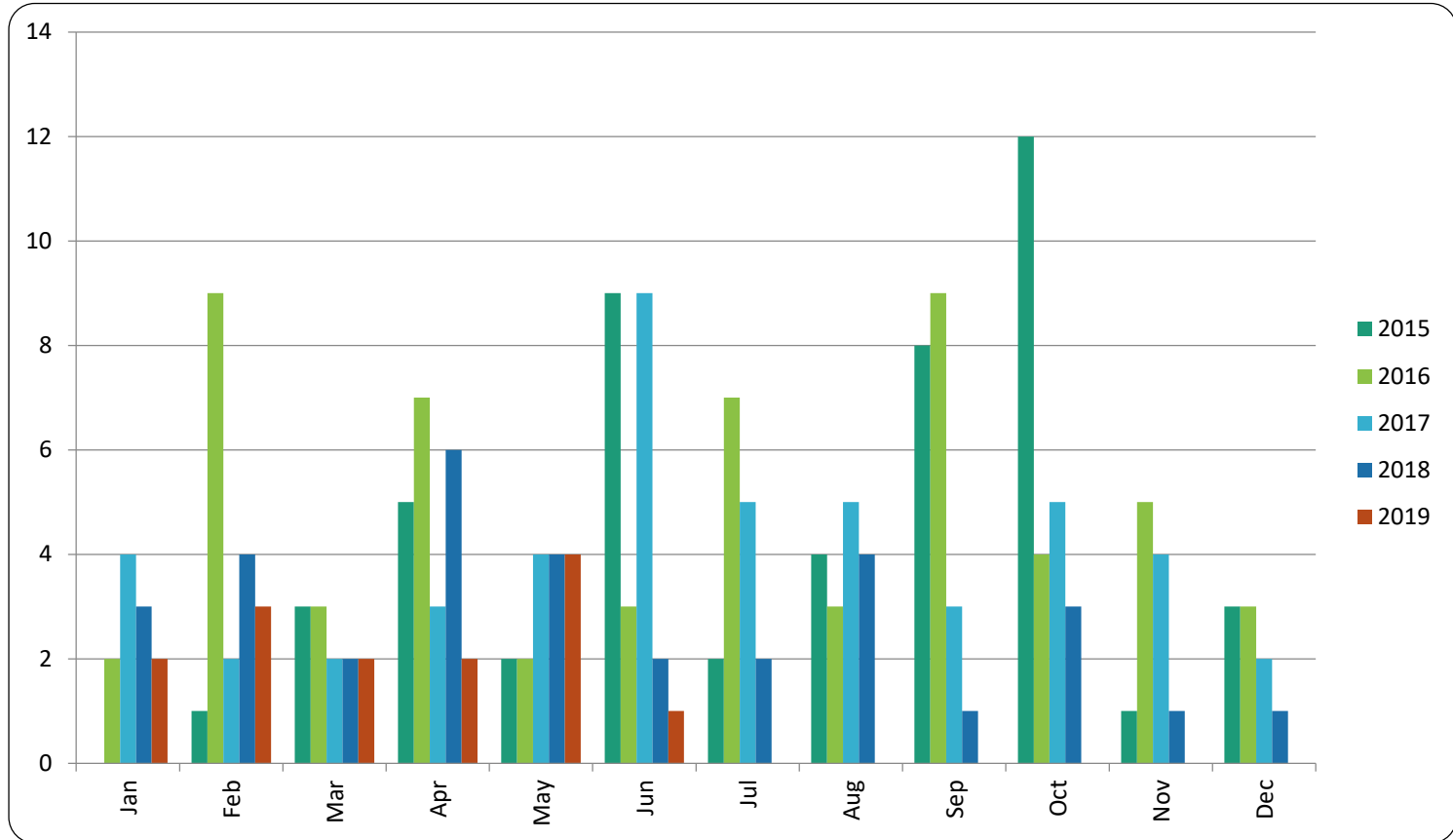


Pemberton Chalets - \$ Volume

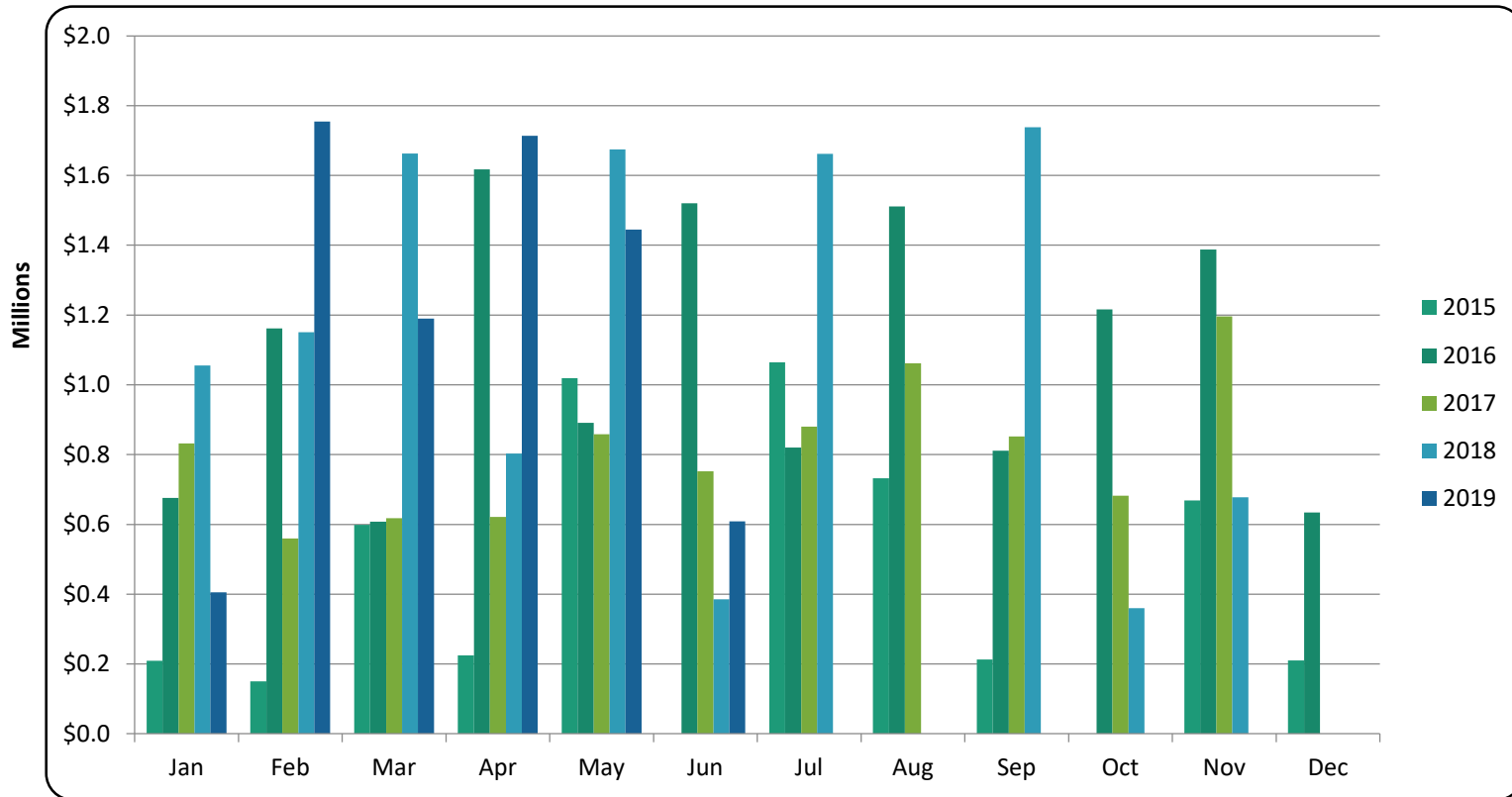


Pemberton Chalets - Transactions



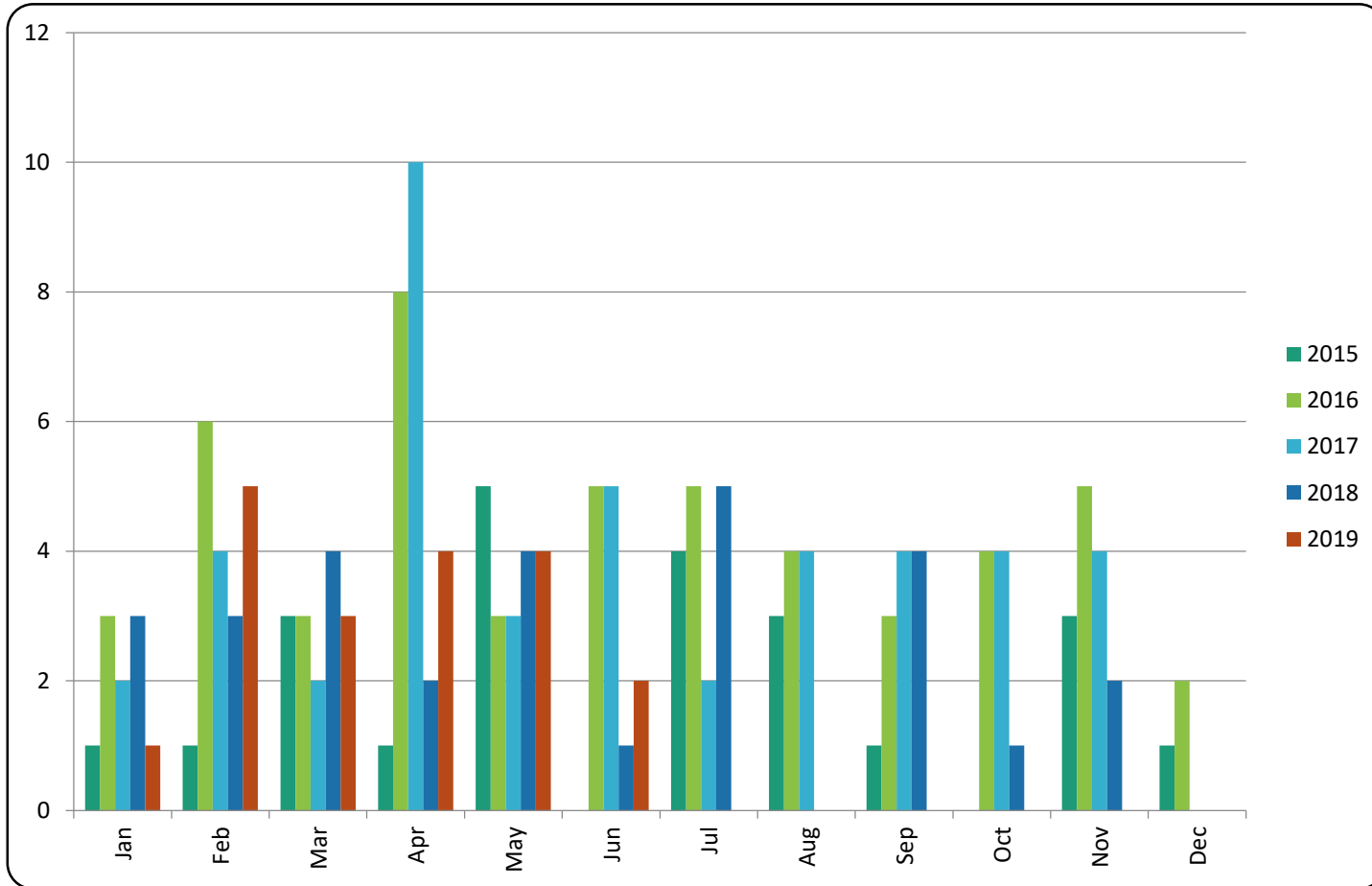


Pemberton Condos - \$ Volume



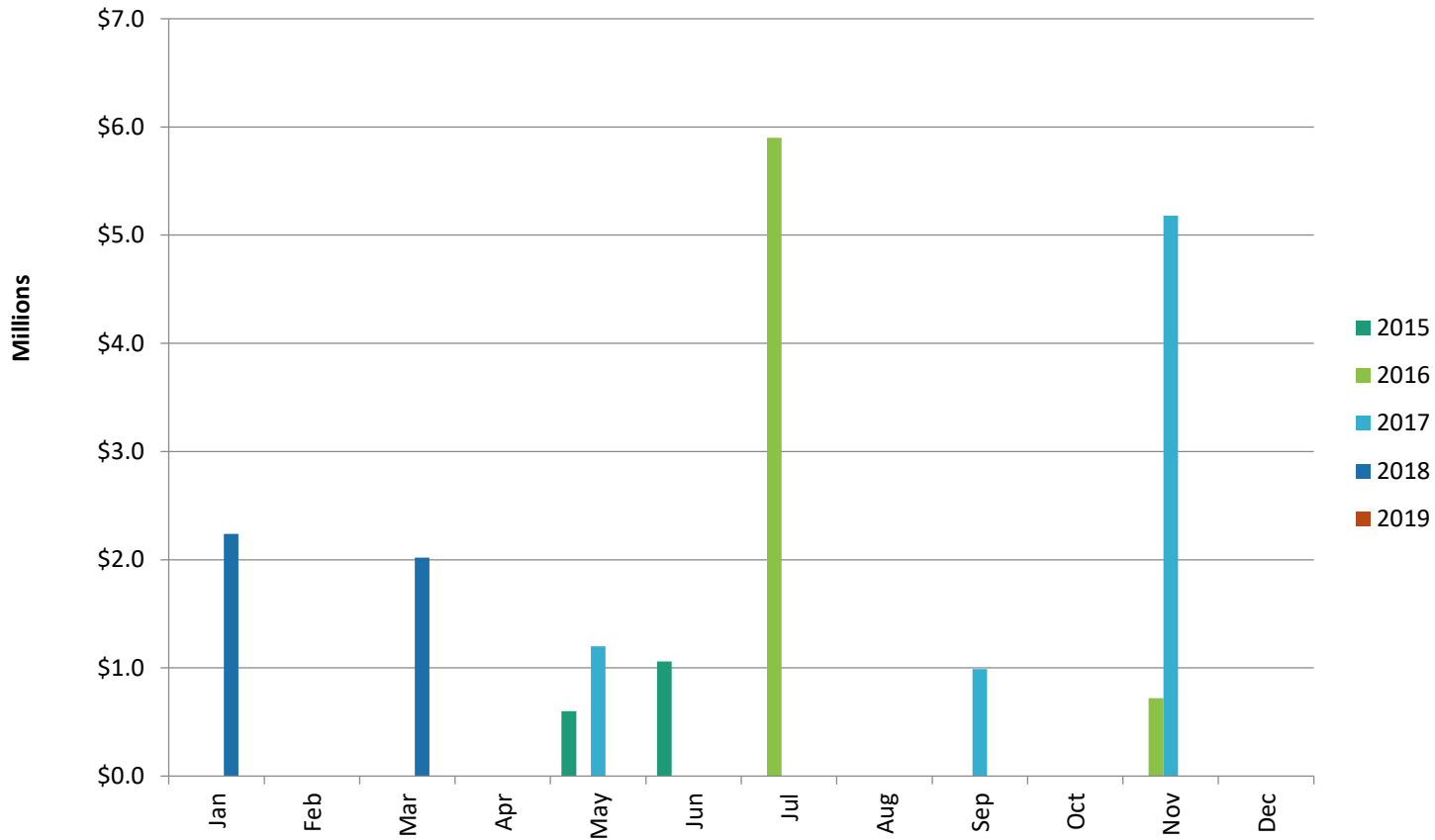


Pemberton Condos - Transactions

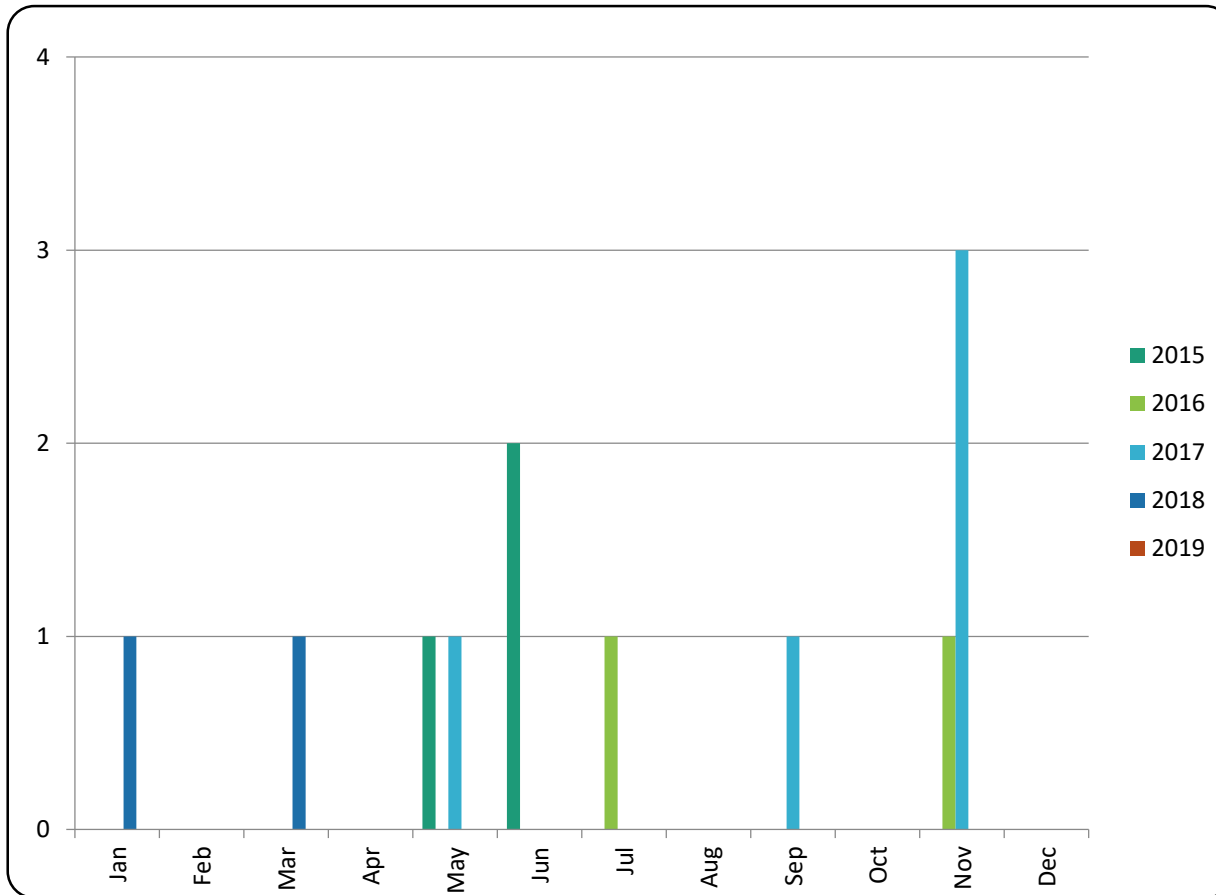




Pemberton Mobile Homes - \$ Volume

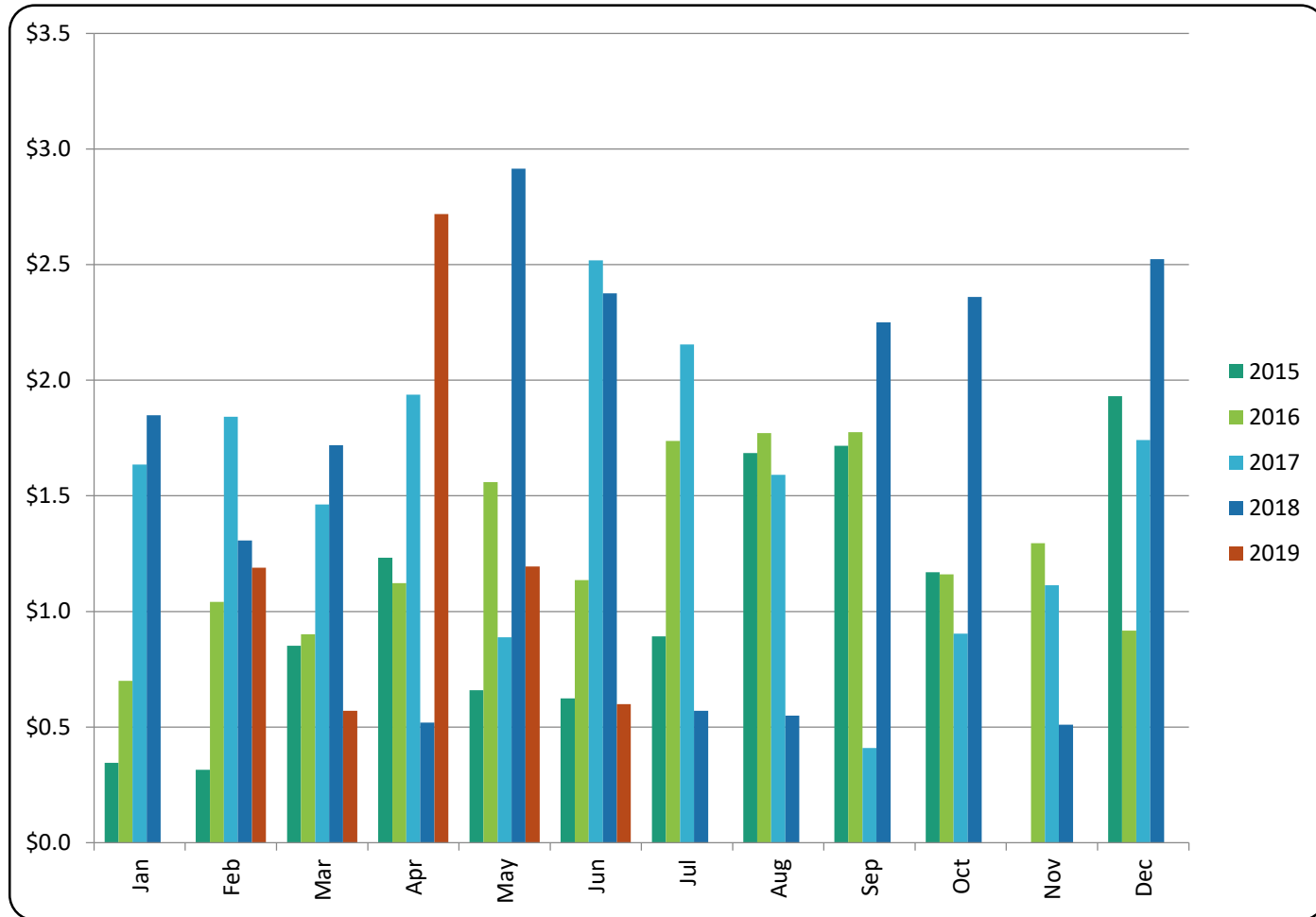


Pemberton Mobile Homes - Transactions

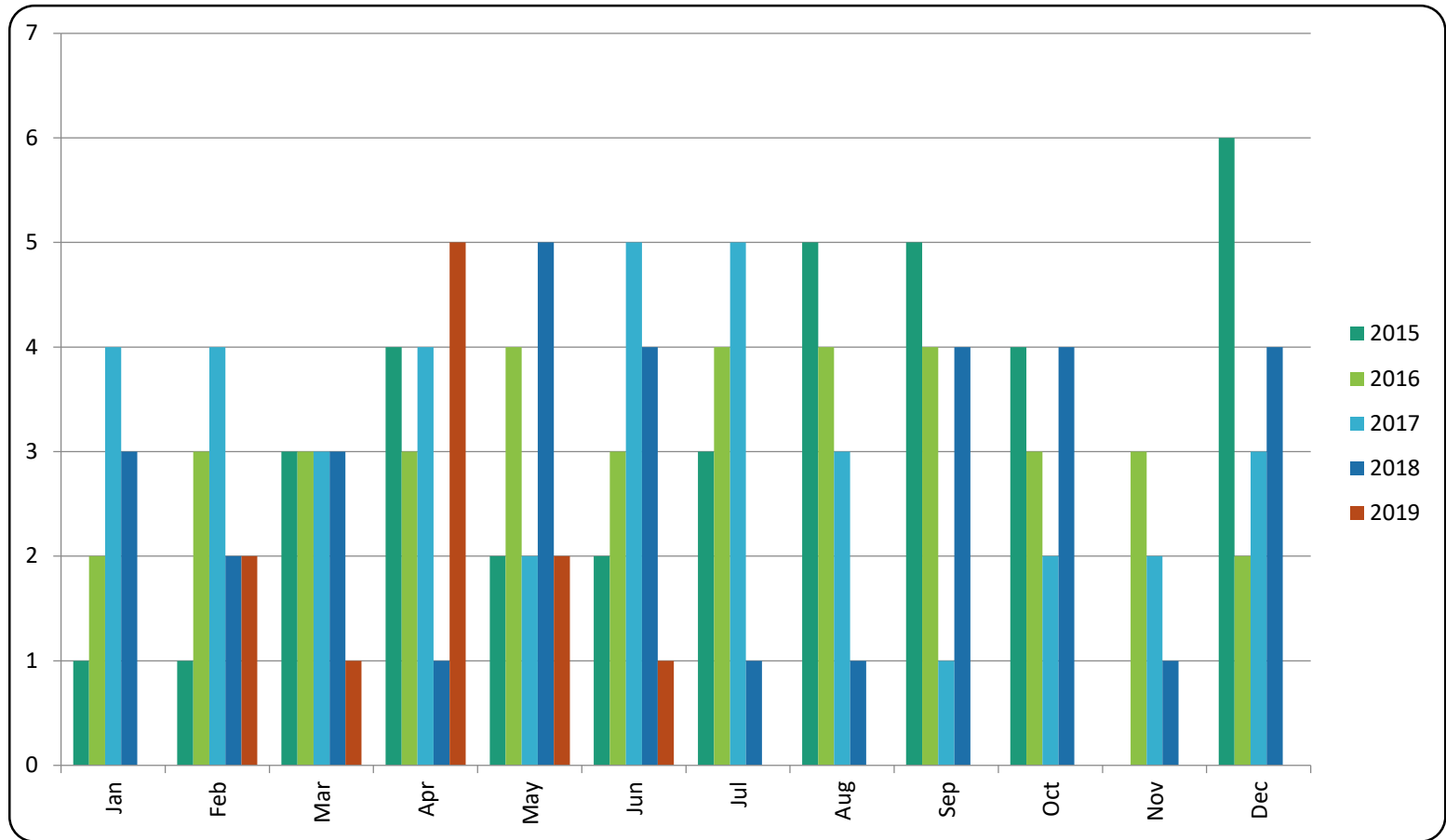




Pemberton Townhomes - \$ Volume

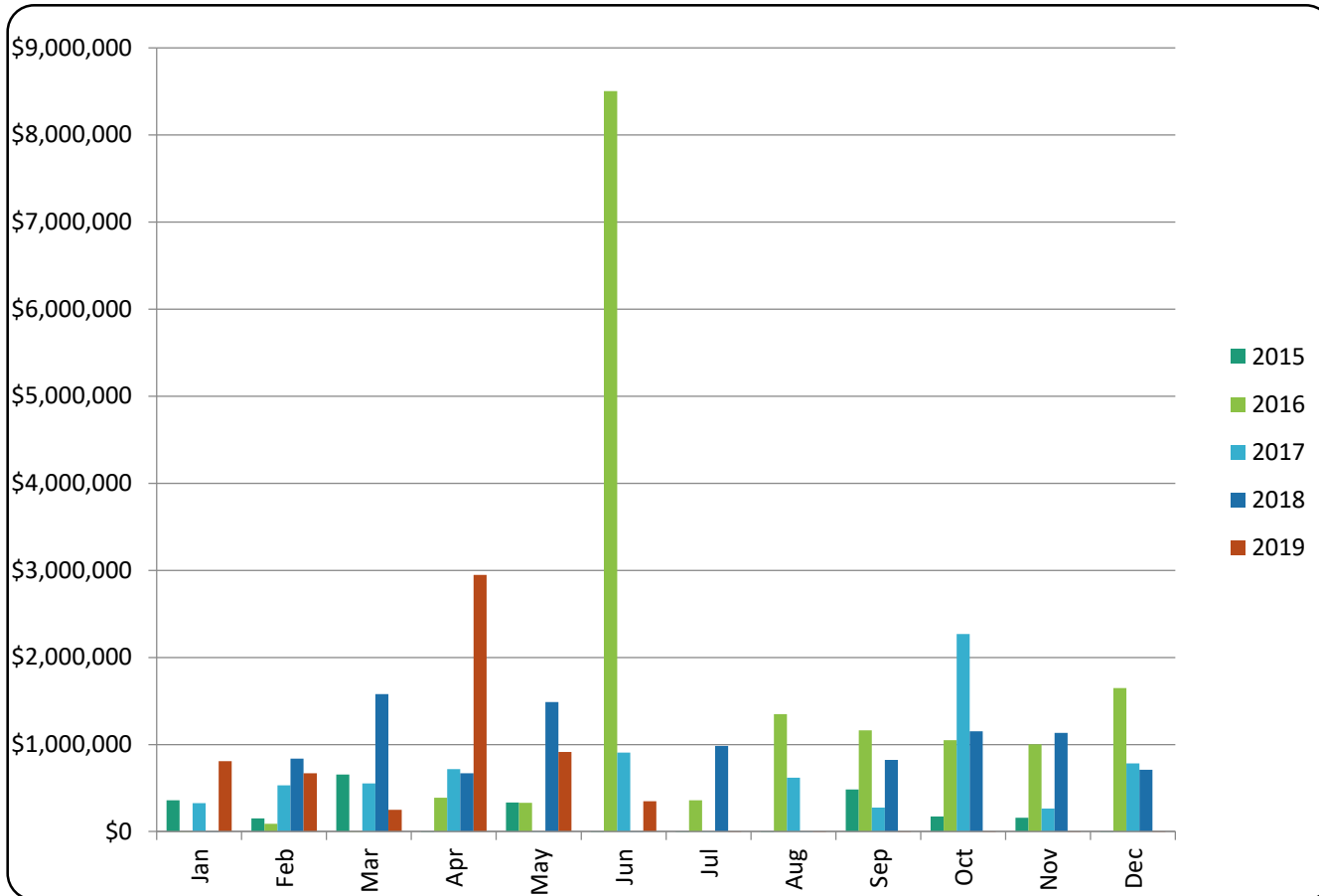


Pemberton Townhomes - Transactions





Pemberton Vacant Land - \$ Volume

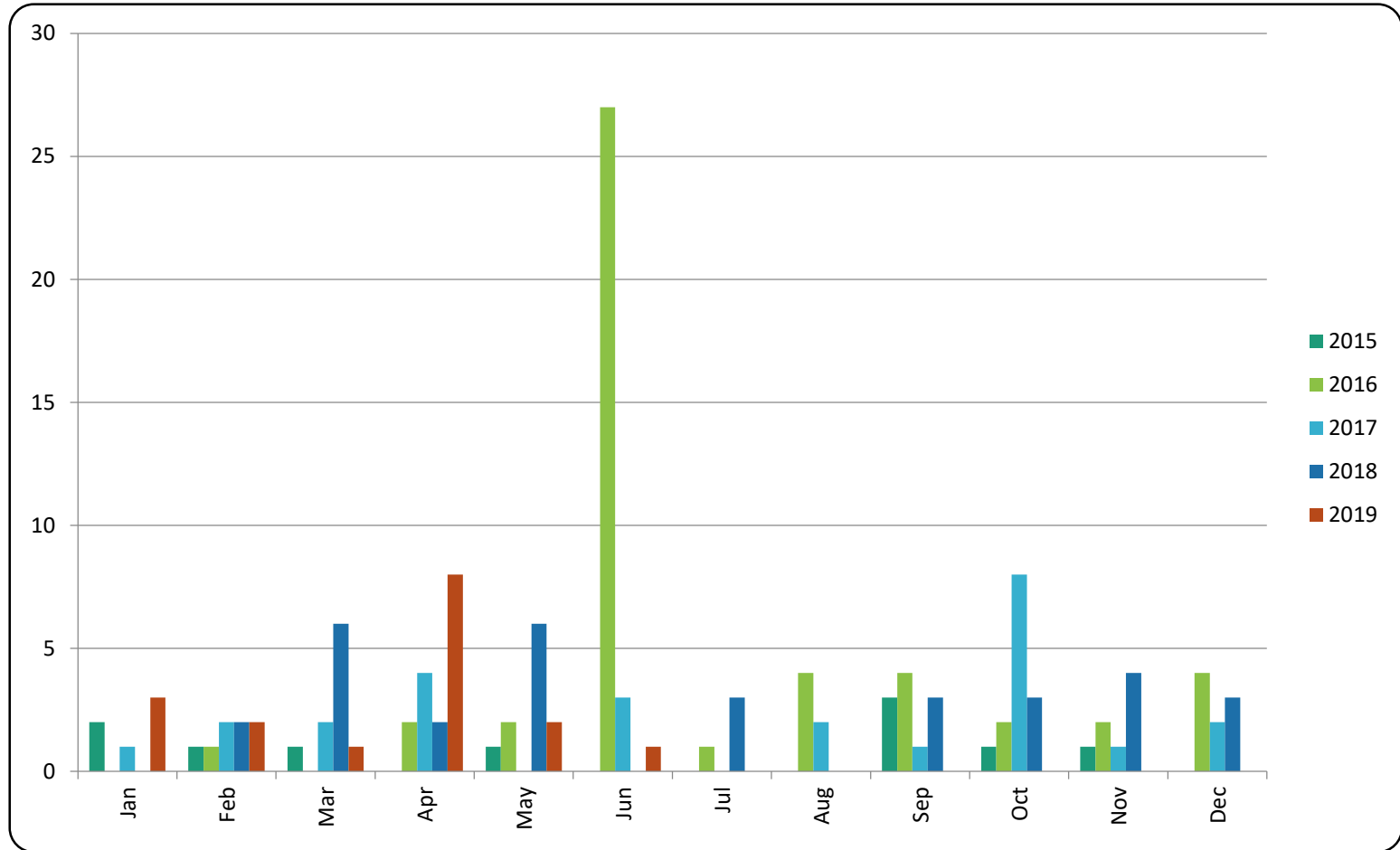


All sales information is derived from the Whistler Listing Service and is believed correct. E&OE

June 2019

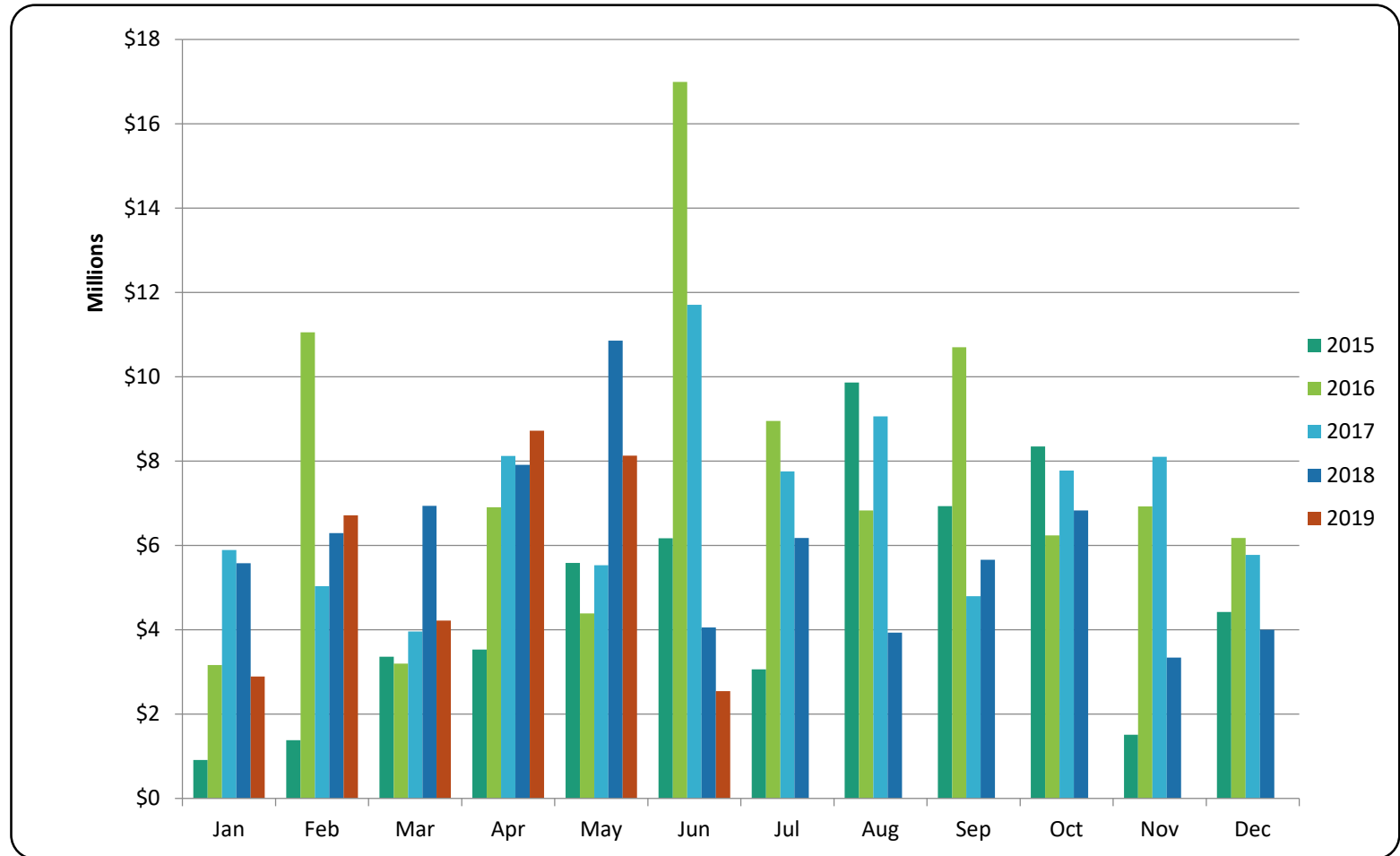


Pemberton Vacant Land - Transactions





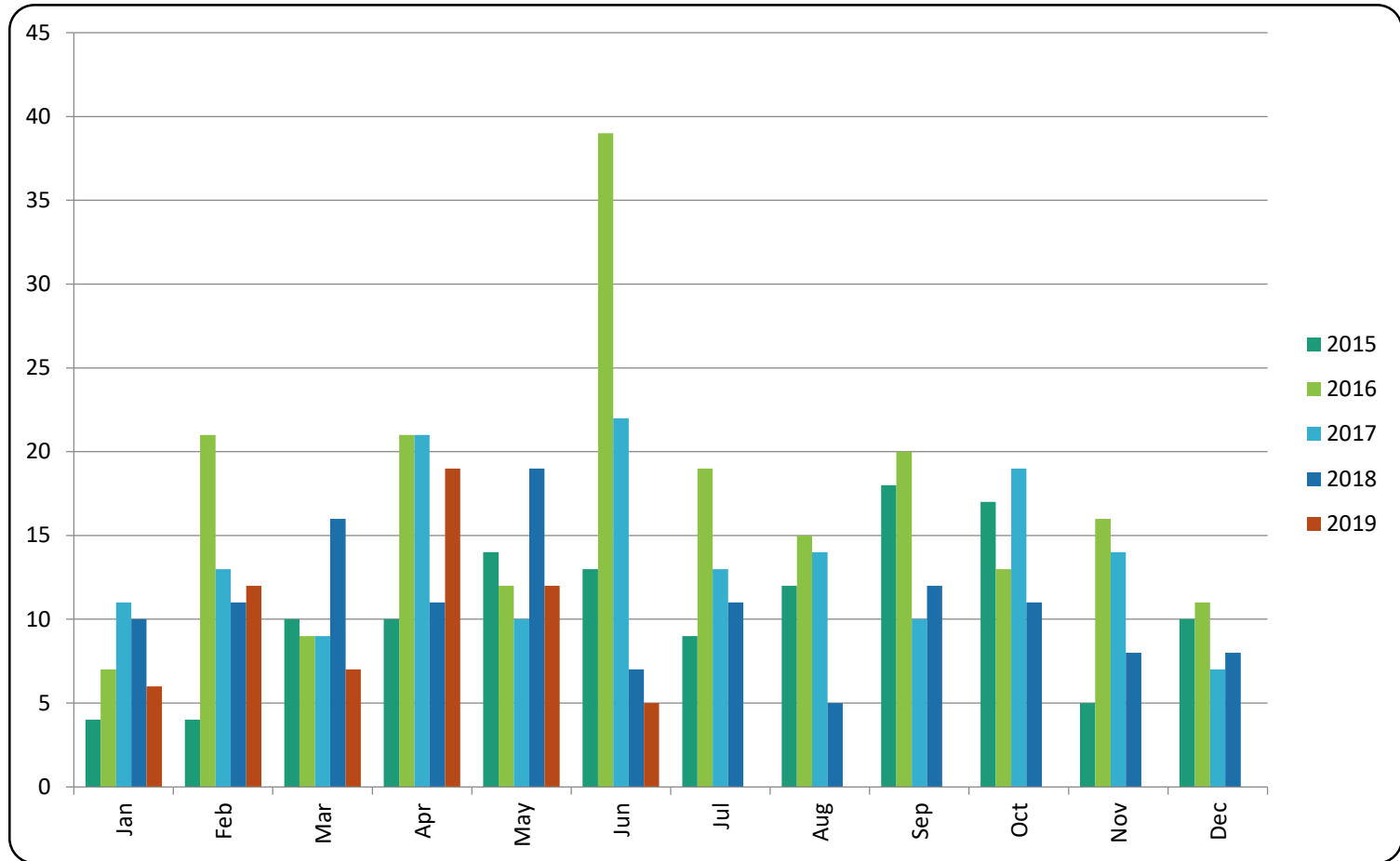
Pemberton Totals - \$ Volume





RE/MAX
SEA TO SKY
REAL ESTATE
INDEPENDENTLY OWNED AND OPERATED

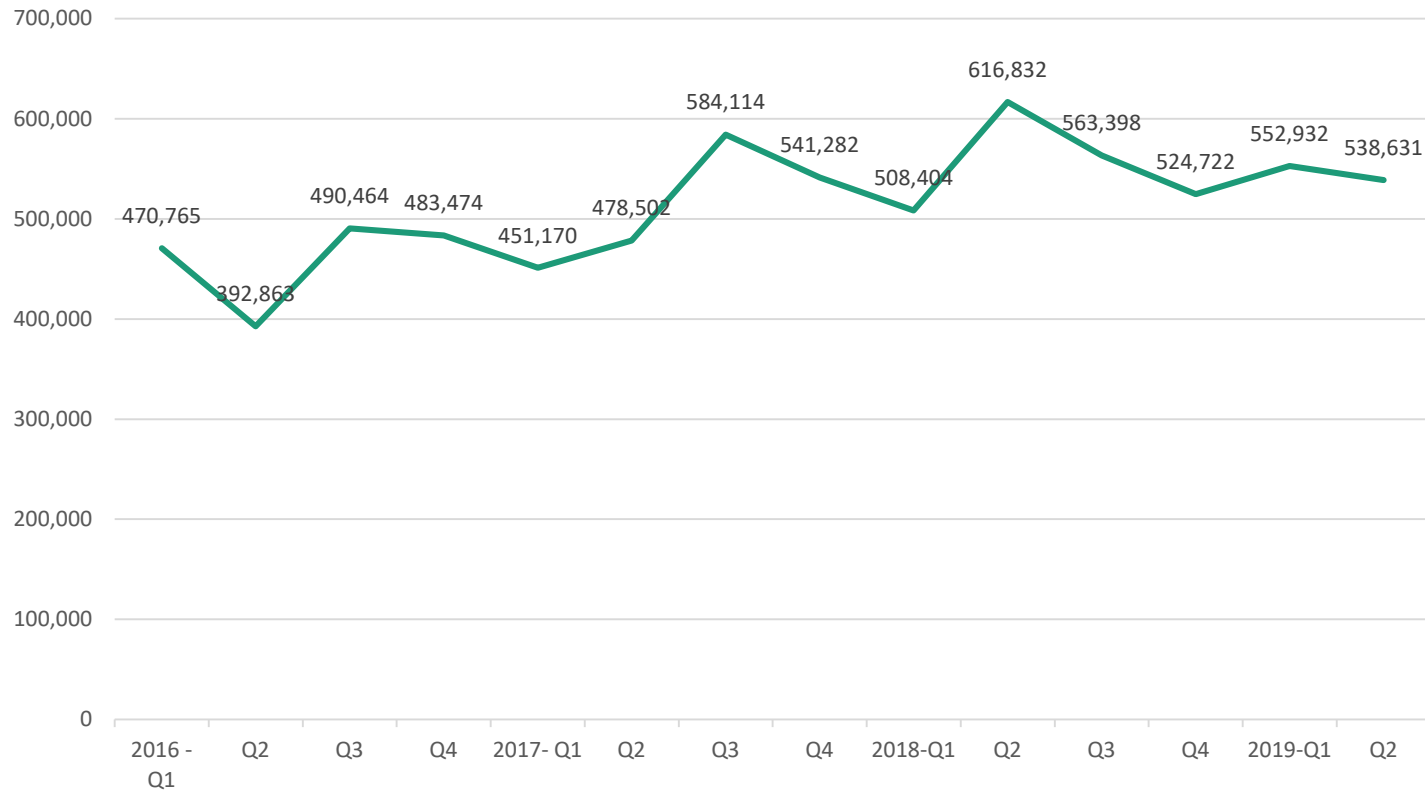
Pemberton Totals - Transactions





RE/MAX
SEA TO SKY
REAL ESTATE
INDEPENDENTLY OWNED AND OPERATED

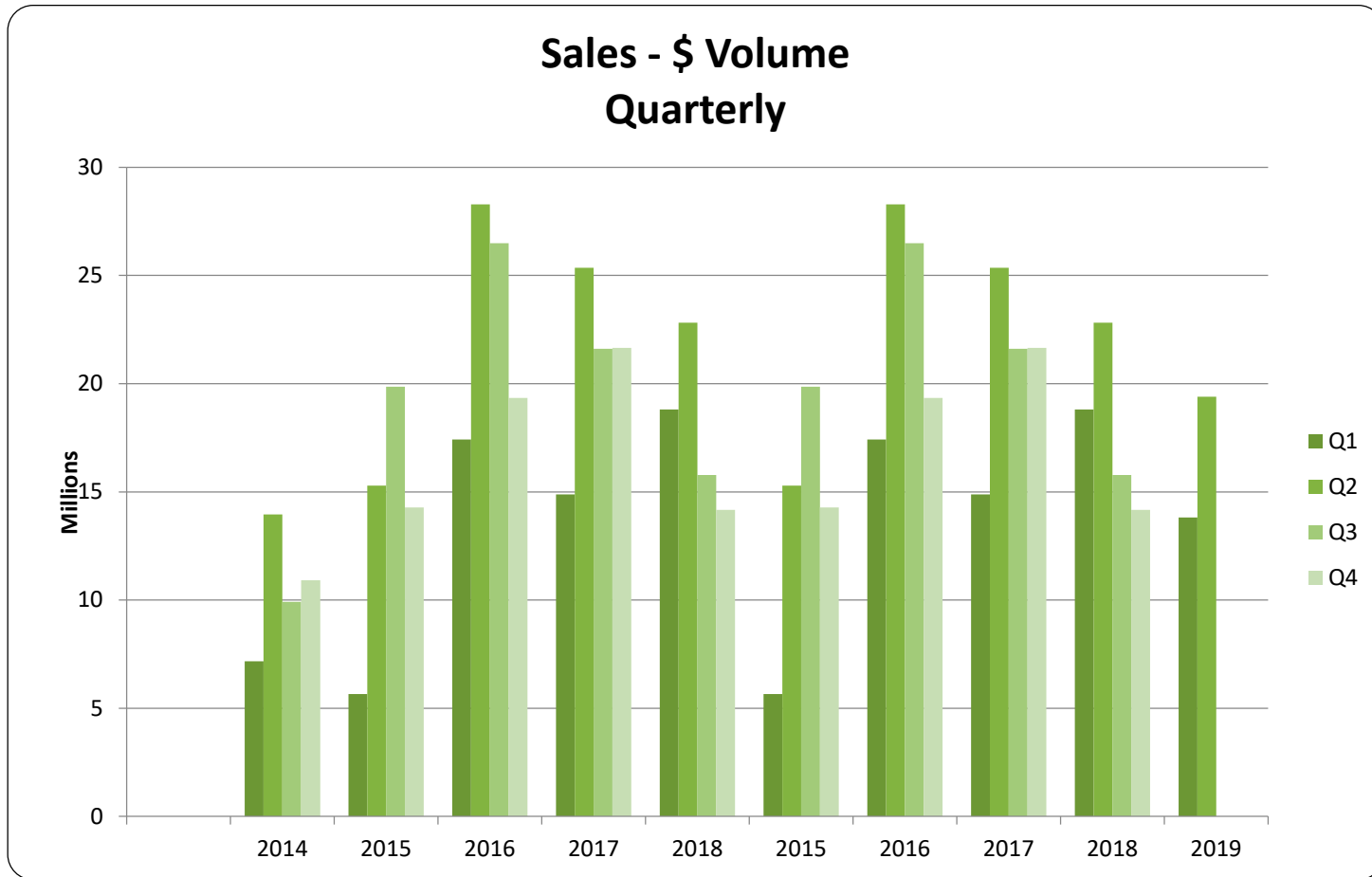
\$ Average - Quarterly



Please note this chart does not indicate property value trends, only the average price of properties that actually sold for that quarter.

All sales information is derived from the Whistler Listing Service and is believed correct. E&OE

June 2019



Sales - # of Transactions Quarterly

