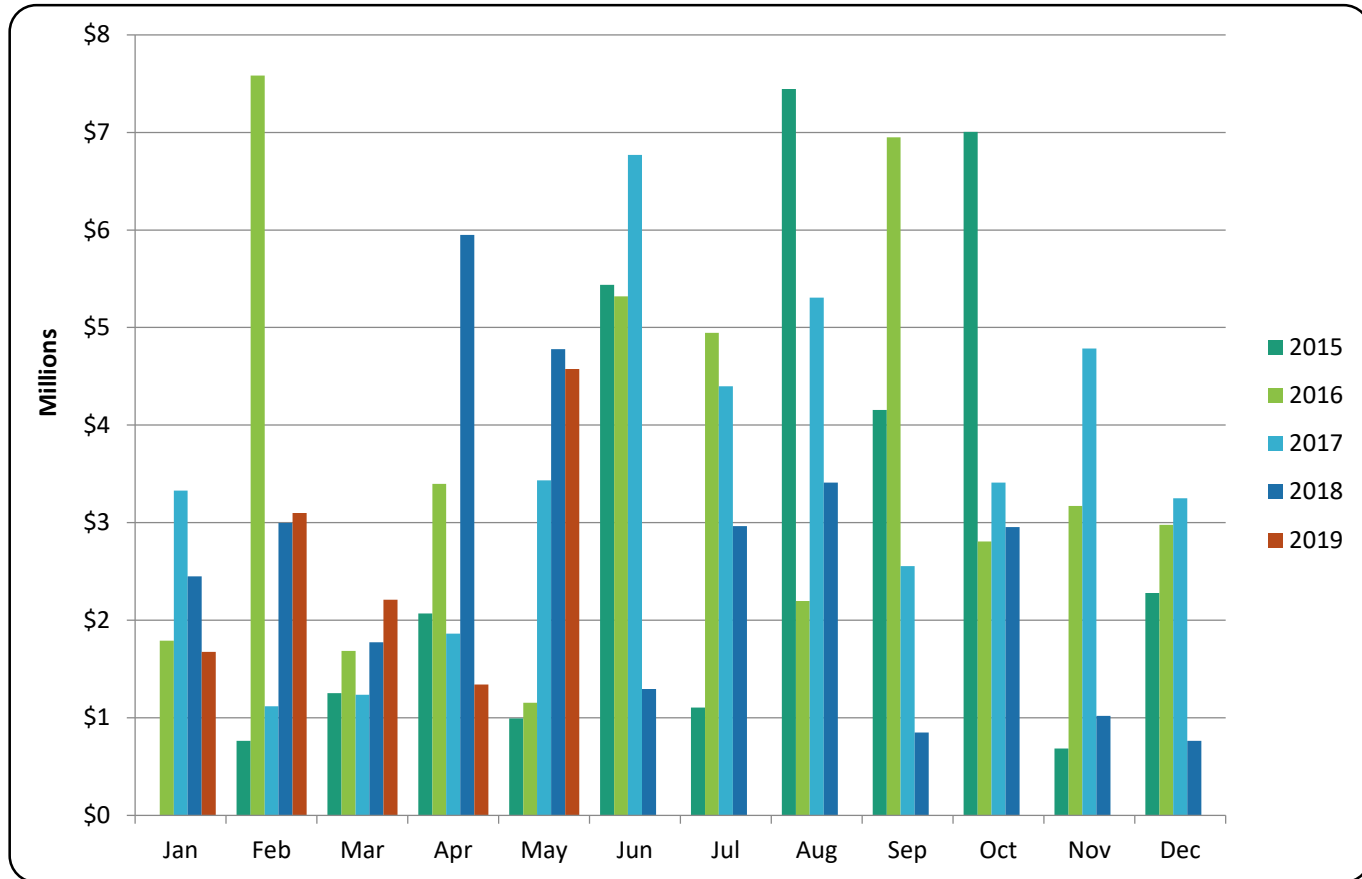
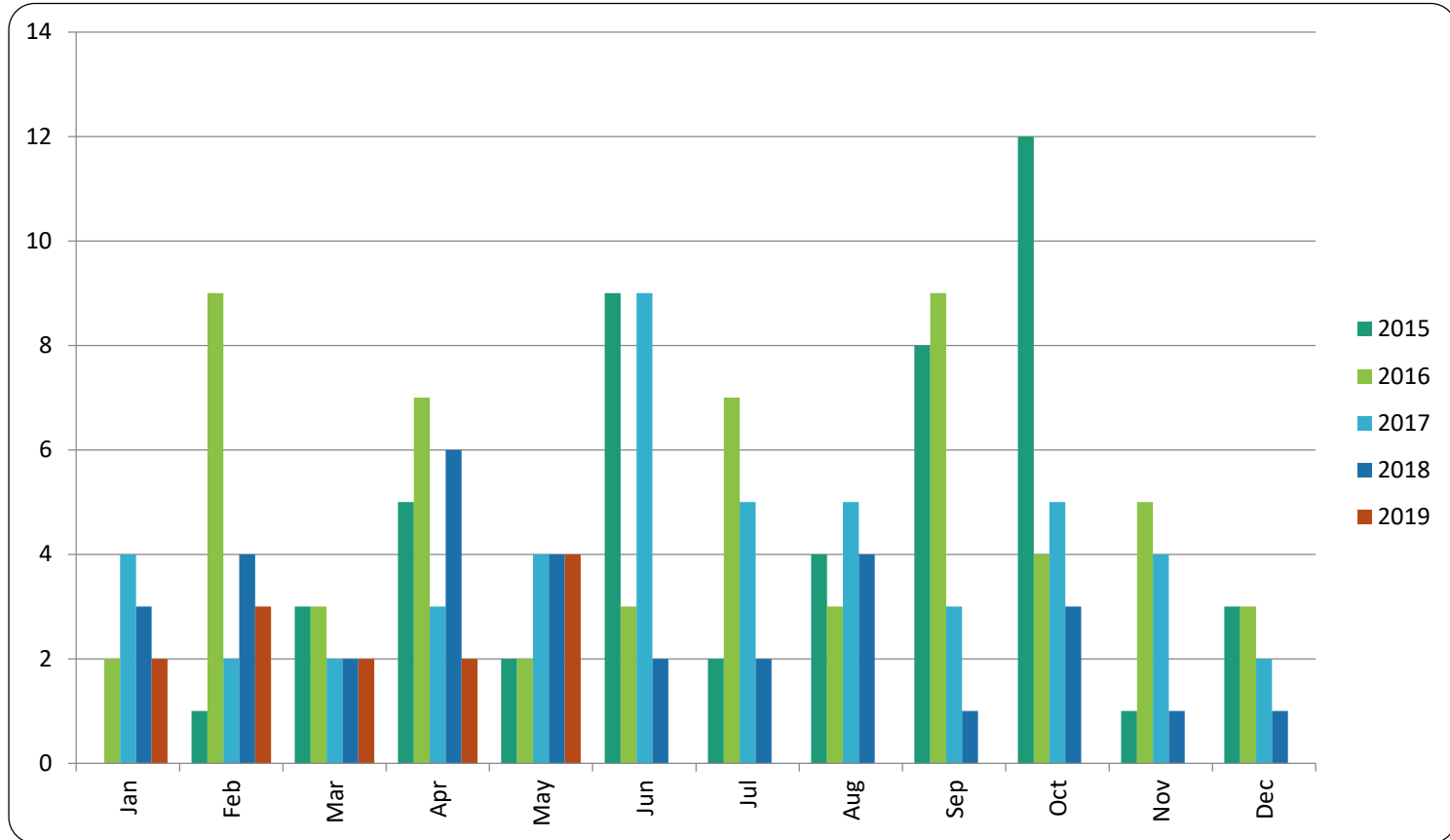


## Pemberton Chalets - \$ Volume



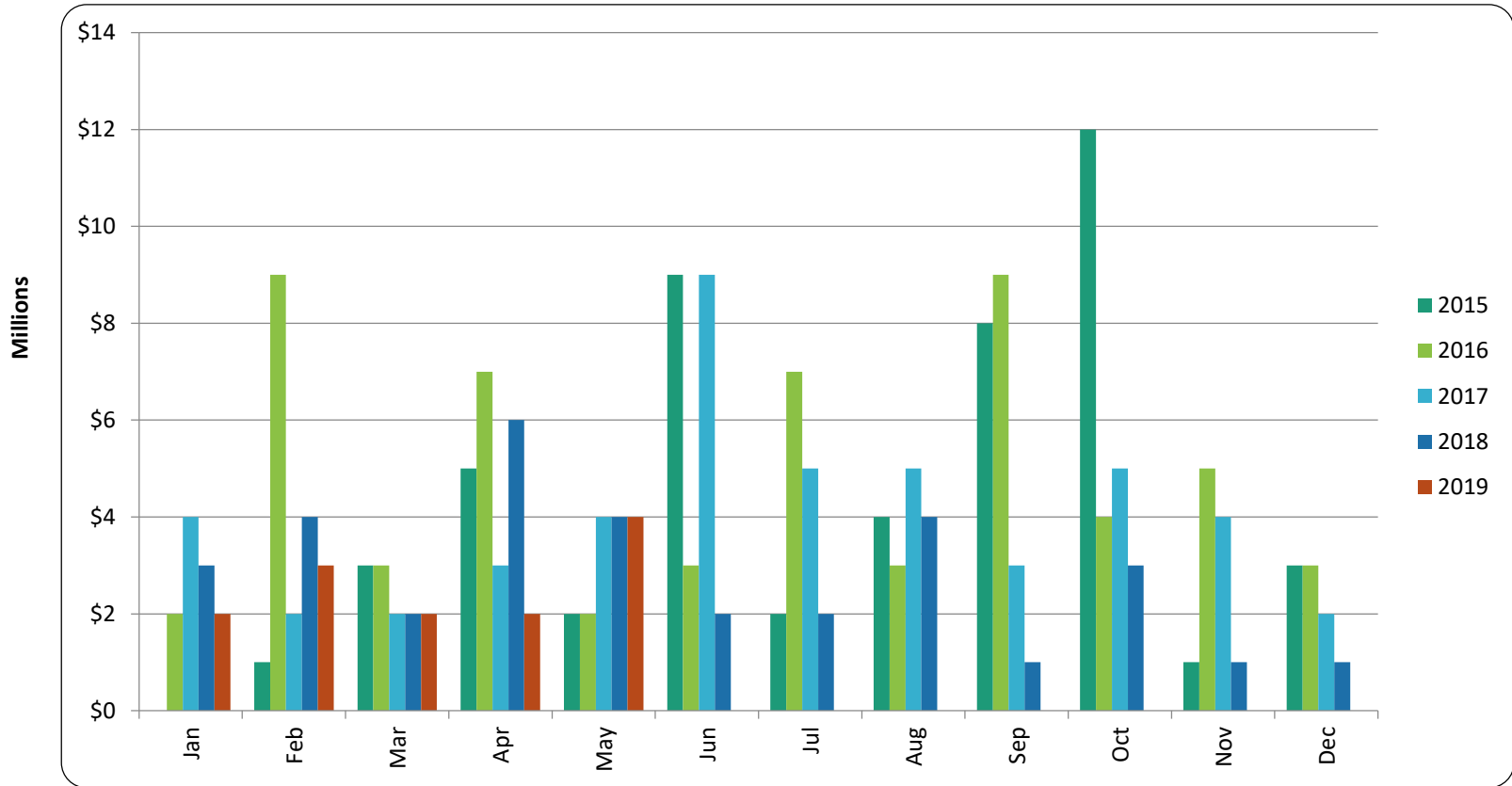


## Pemberton Chalets - Transactions



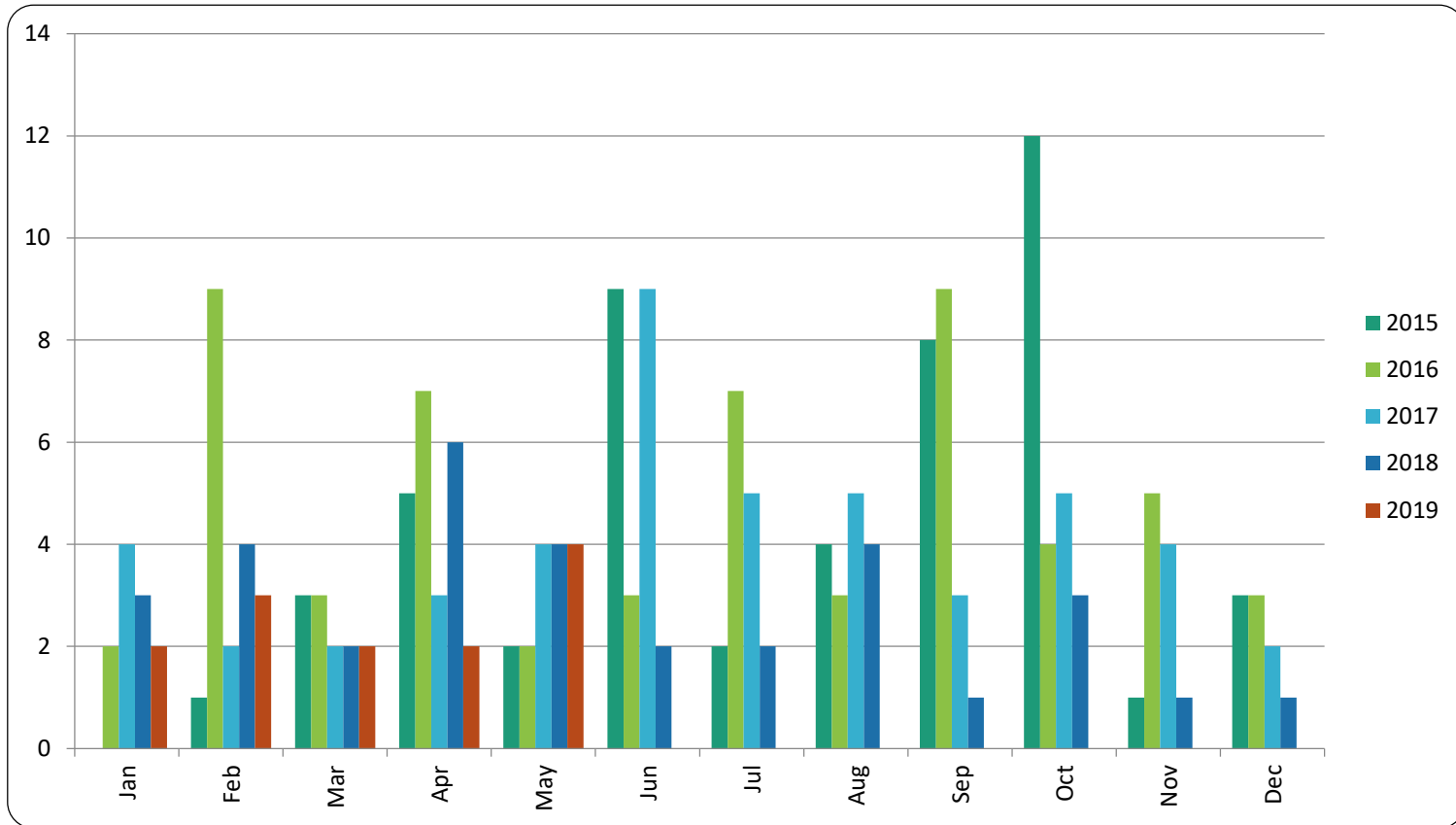


## Pemberton Condos - \$ Volume



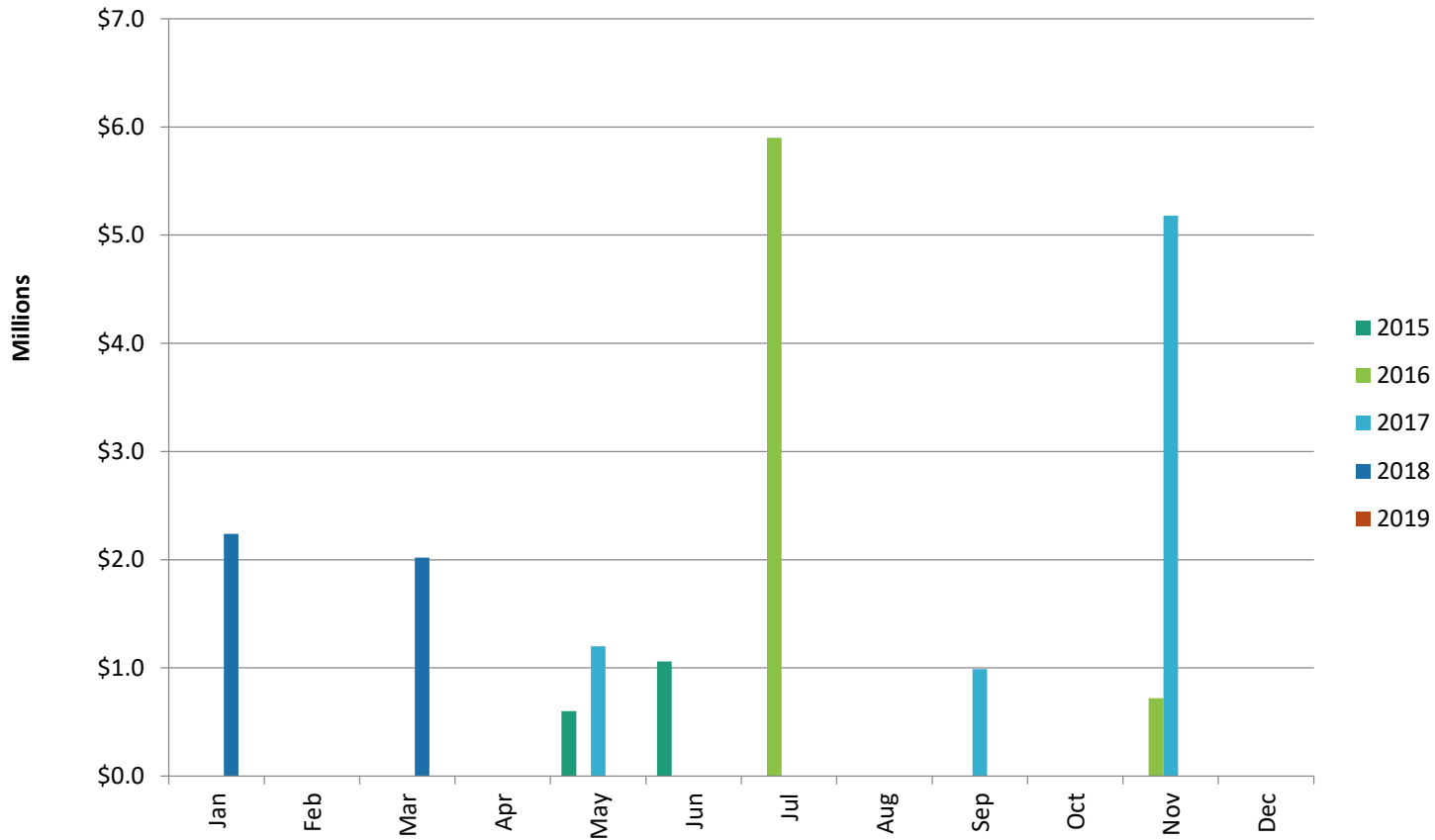


## Pemberton Condos - Transactions

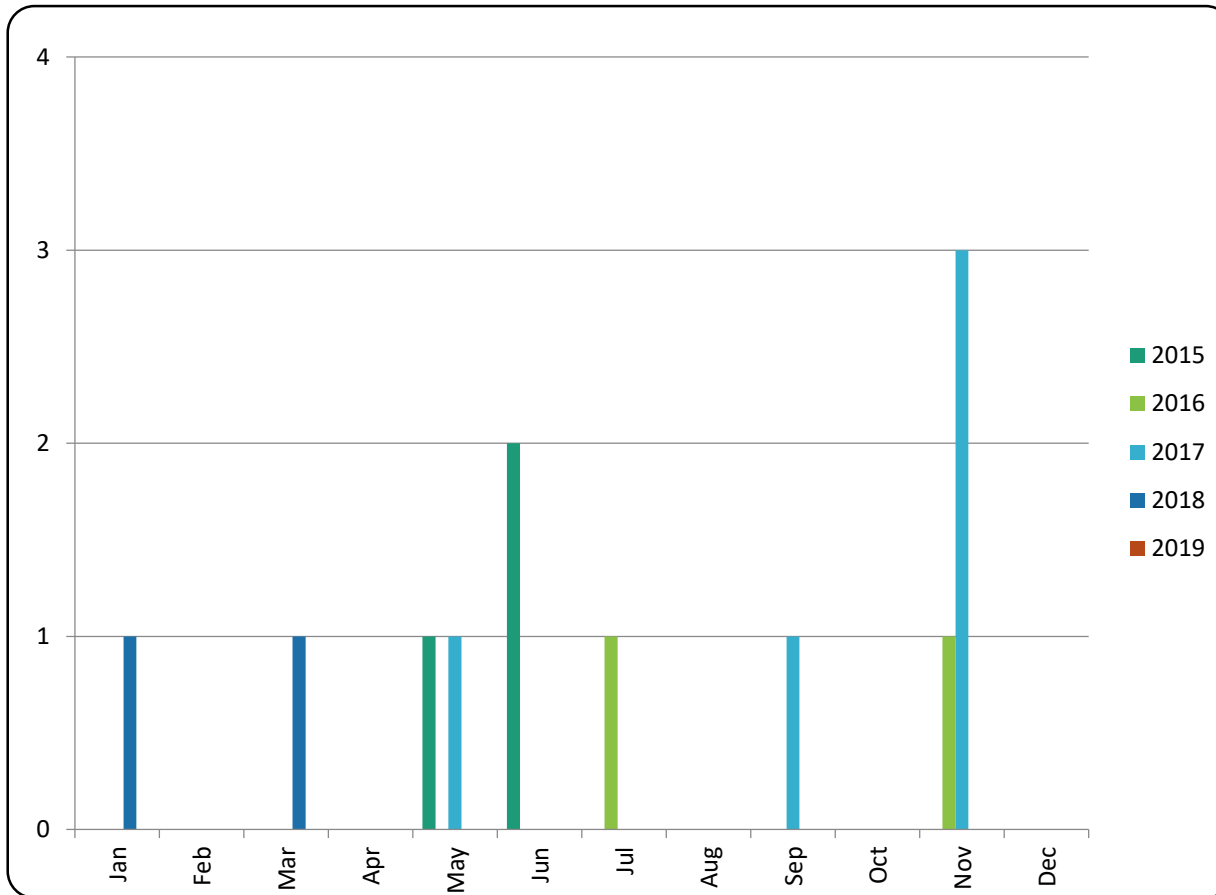




## Pemberton Mobile Homes - \$ Volume

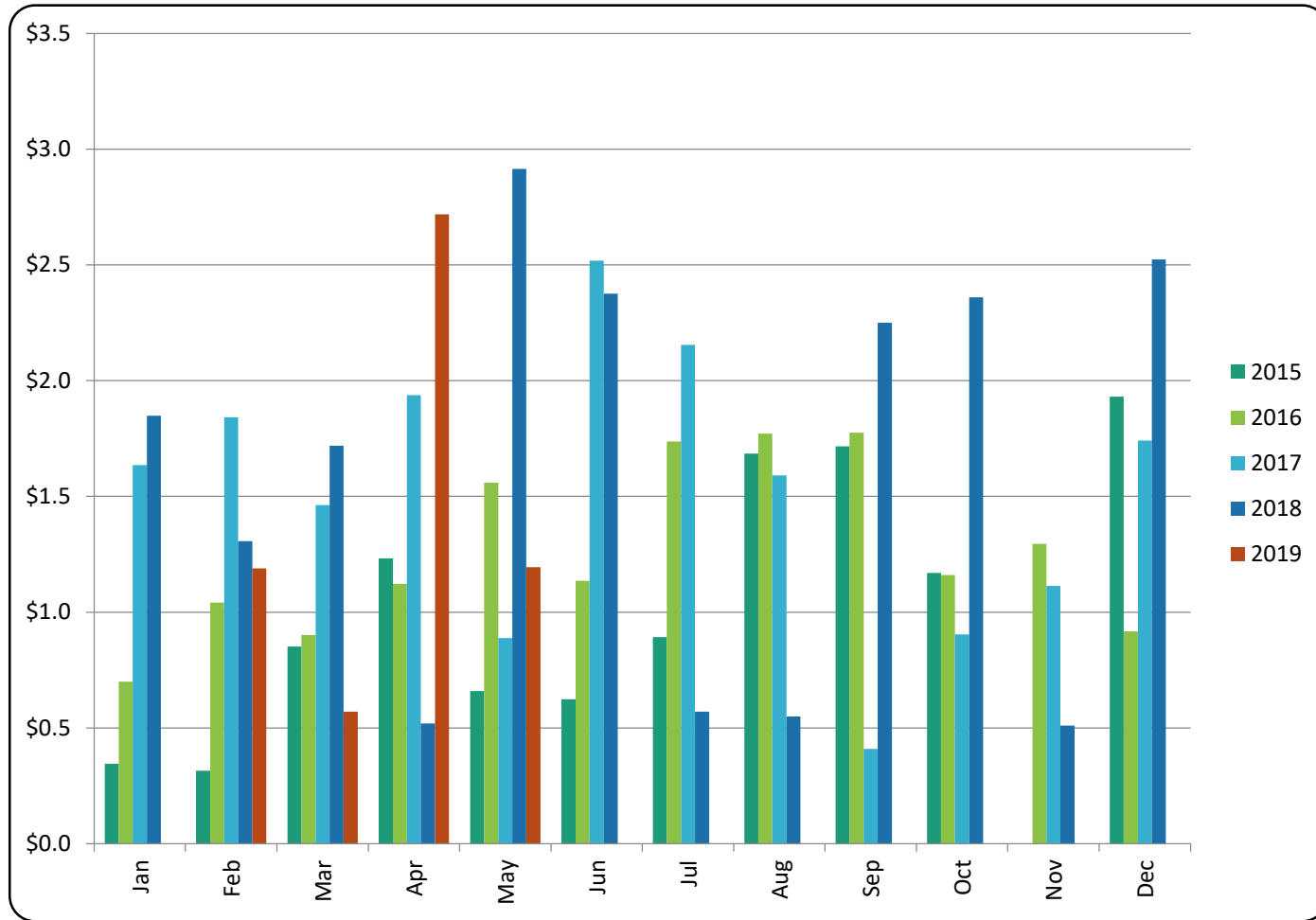


## Pemberton Mobile Homes - Transactions

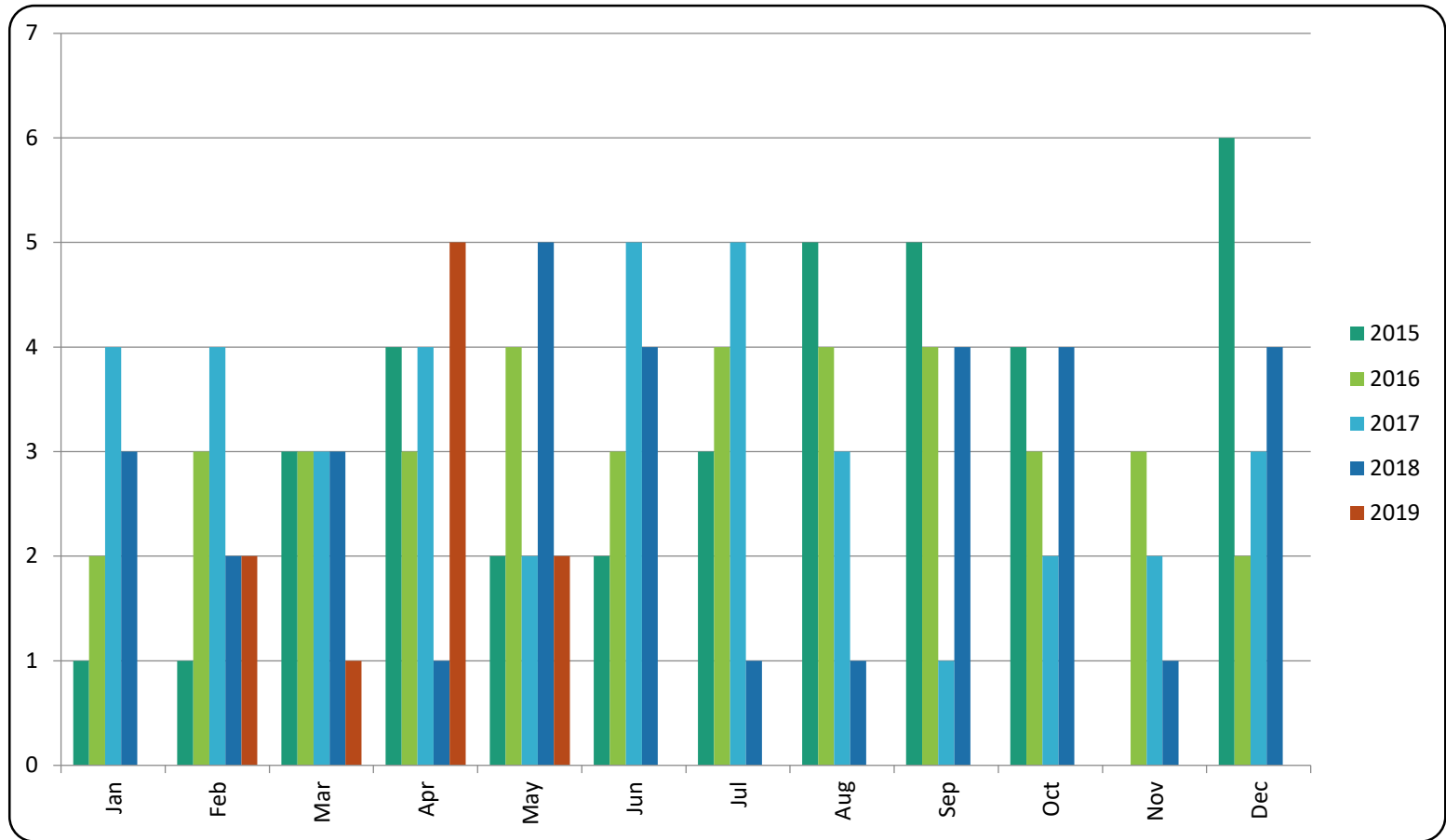




## Pemberton Townhomes - \$ Volume



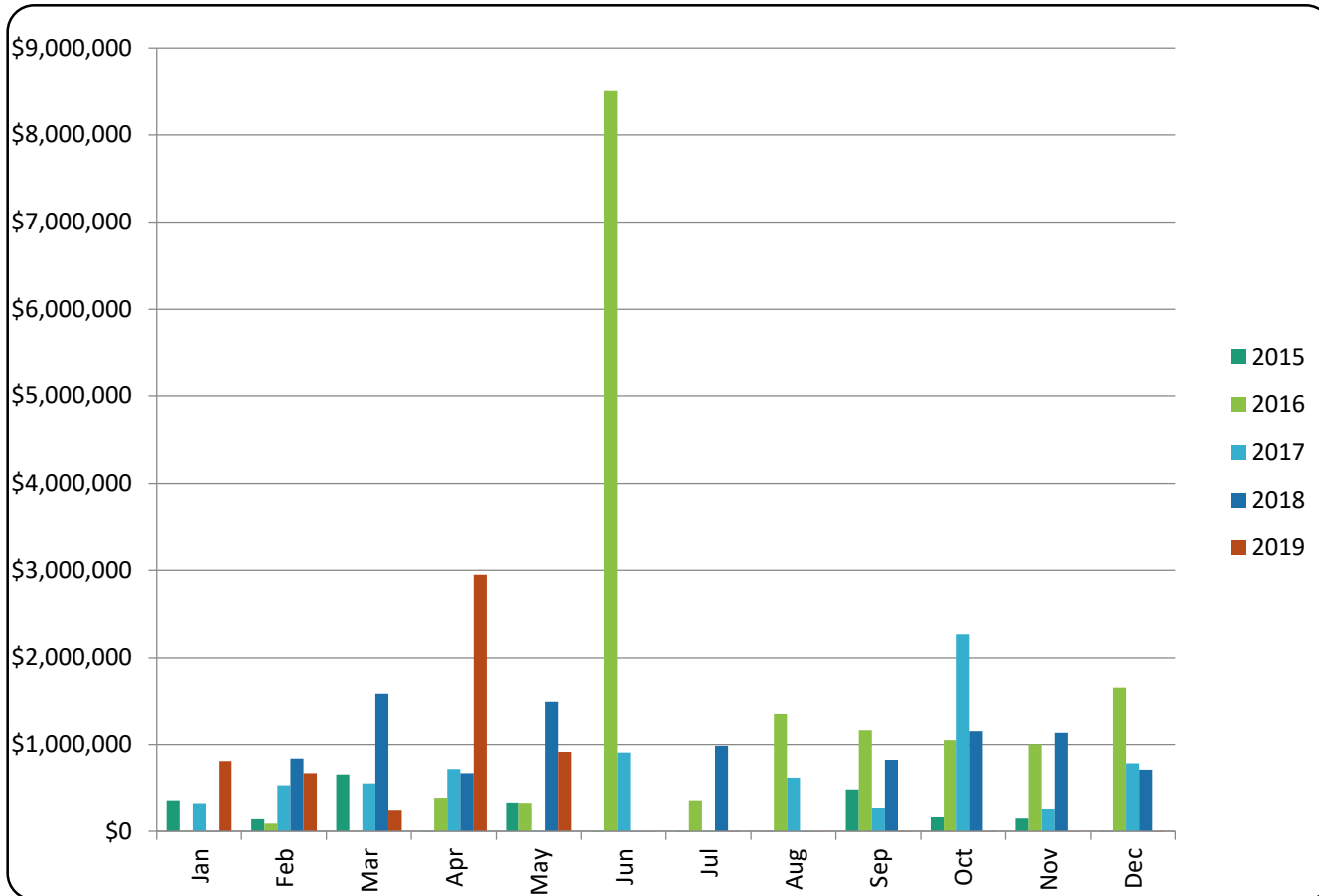
## Pemberton Townhomes - Transactions







## Pemberton Vacant Land - \$ Volume

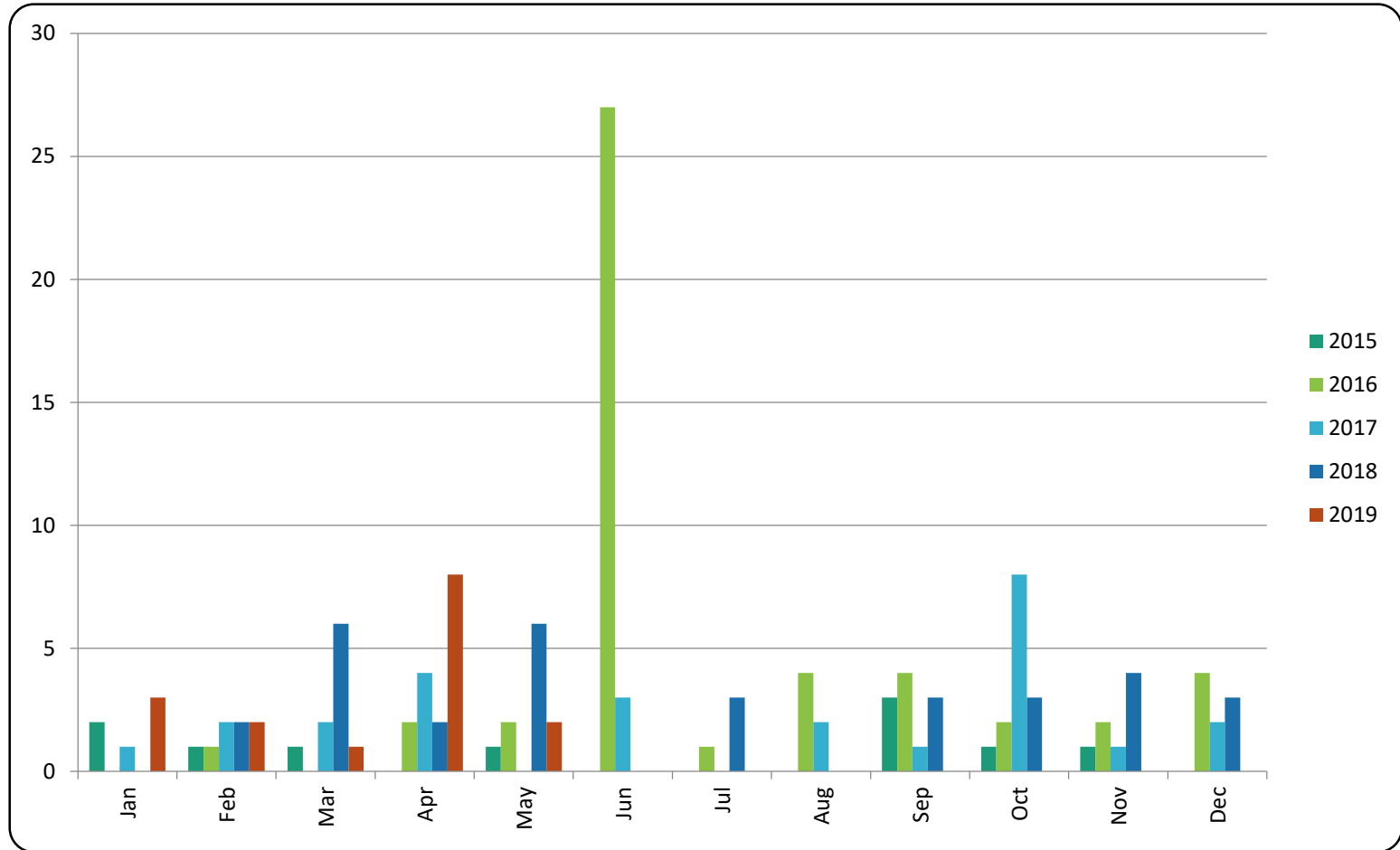


All sales information is derived from the Whistler Listing Service and is believed correct. E&OE

**May 2019**



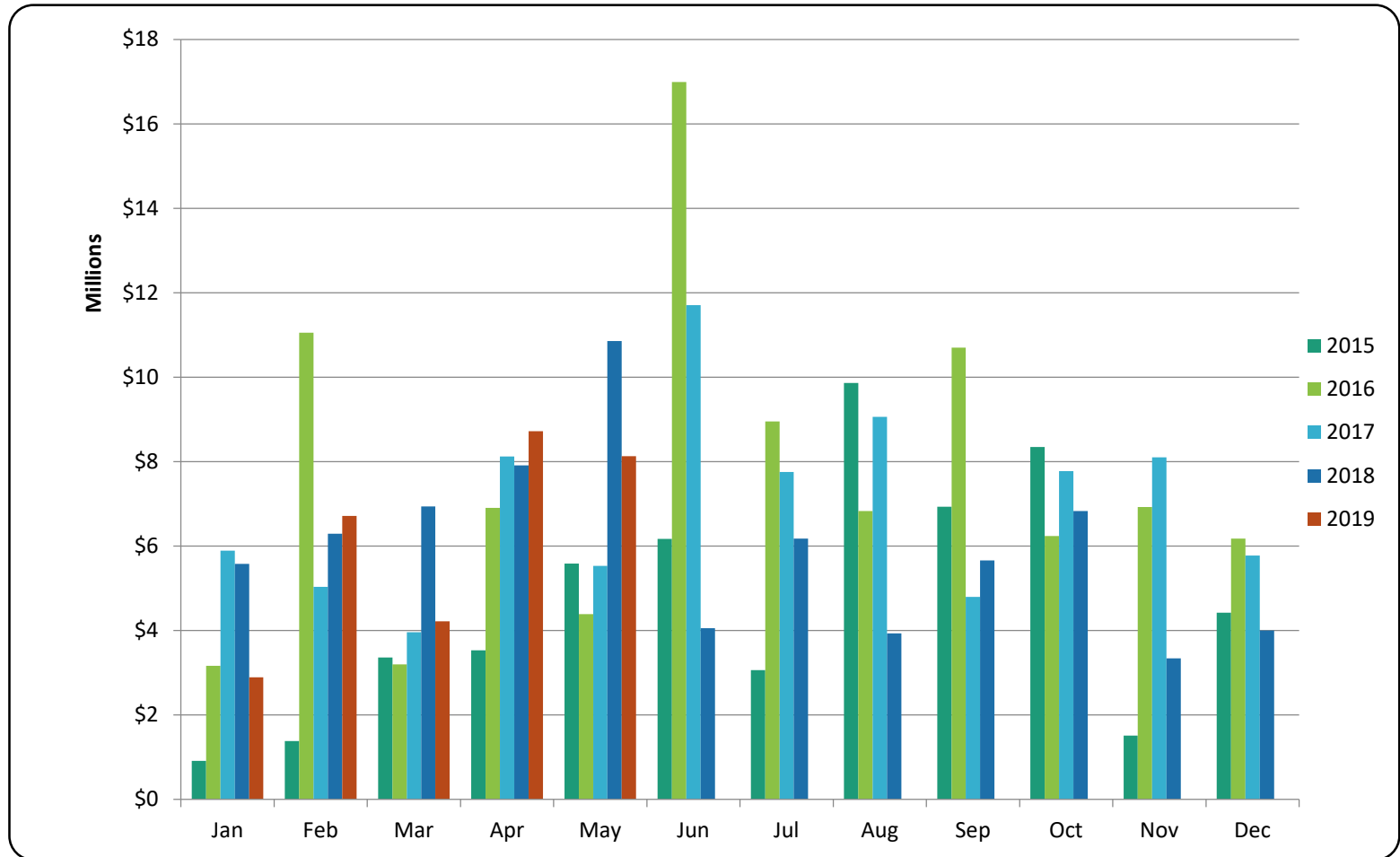
# Pemberton Vacant Land - Transactions





**RE/MAX**  
**SEA TO SKY**  
REAL ESTATE  
INDEPENDENTLY OWNED AND OPERATED

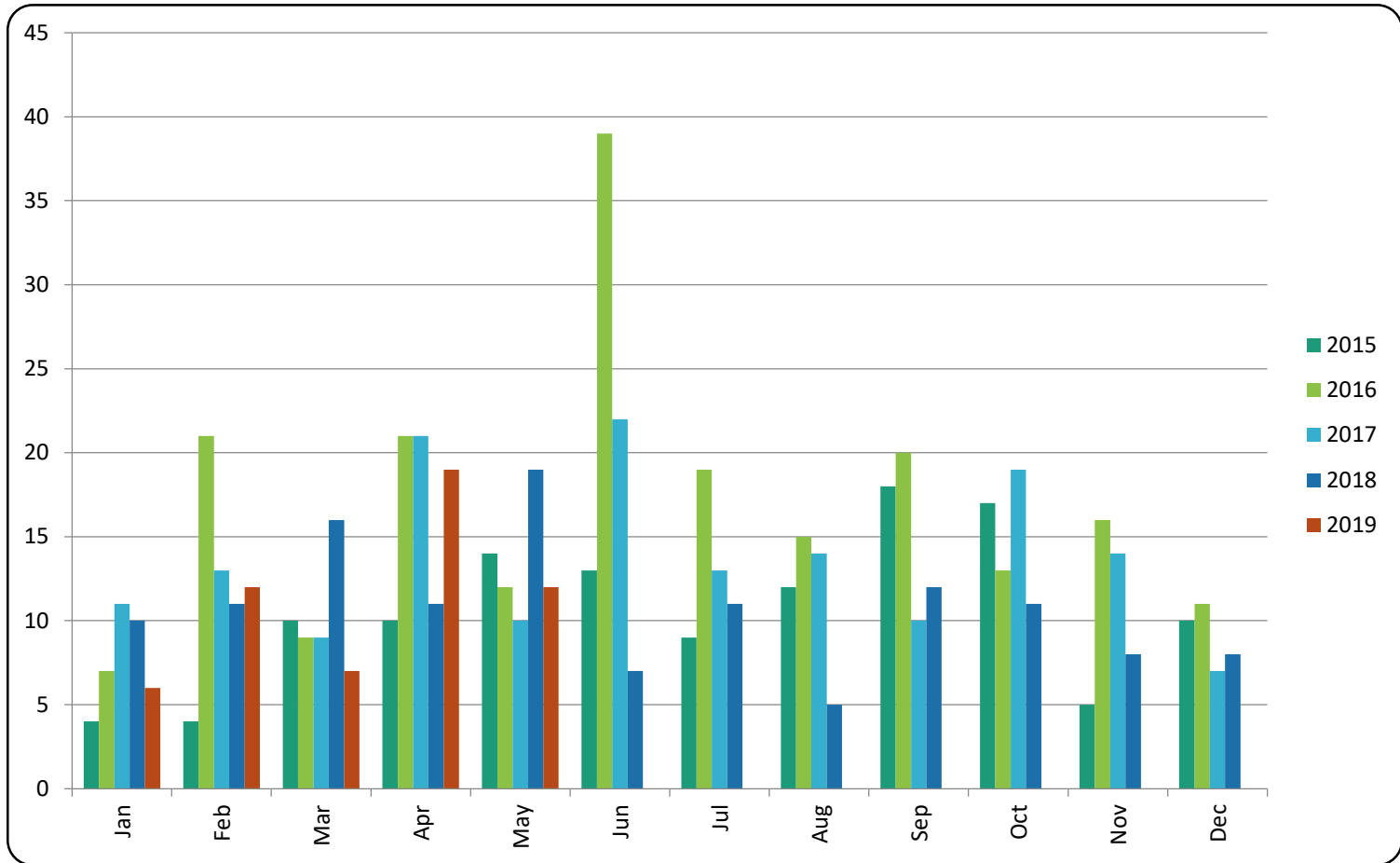
## Pemberton Totals - \$ Volume





**RE/MAX**  
**SEA TO SKY**  
REAL ESTATE  
INDEPENDENTLY OWNED AND OPERATED

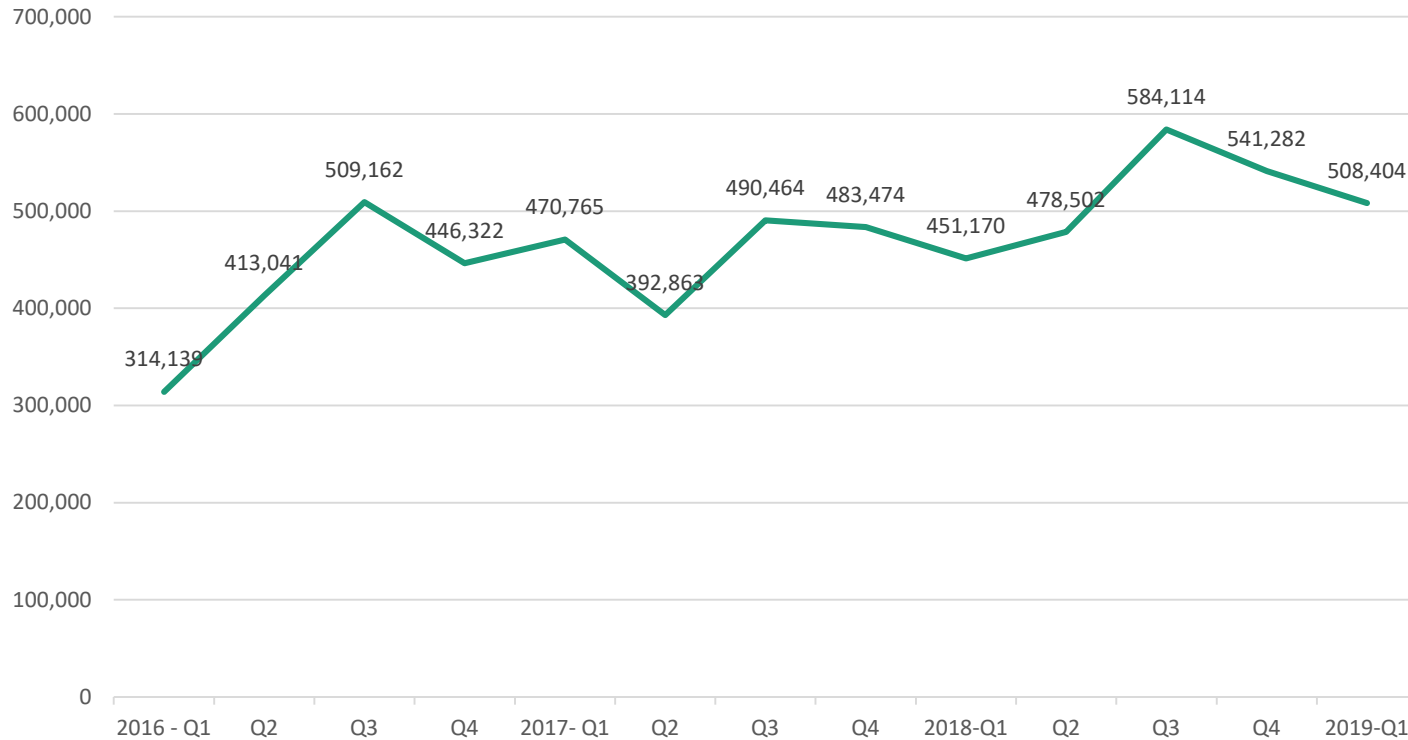
## Pemberton Totals - Transactions





**RE/MAX**  
**SEA TO SKY**  
REAL ESTATE  
INDEPENDENTLY OWNED AND OPERATED

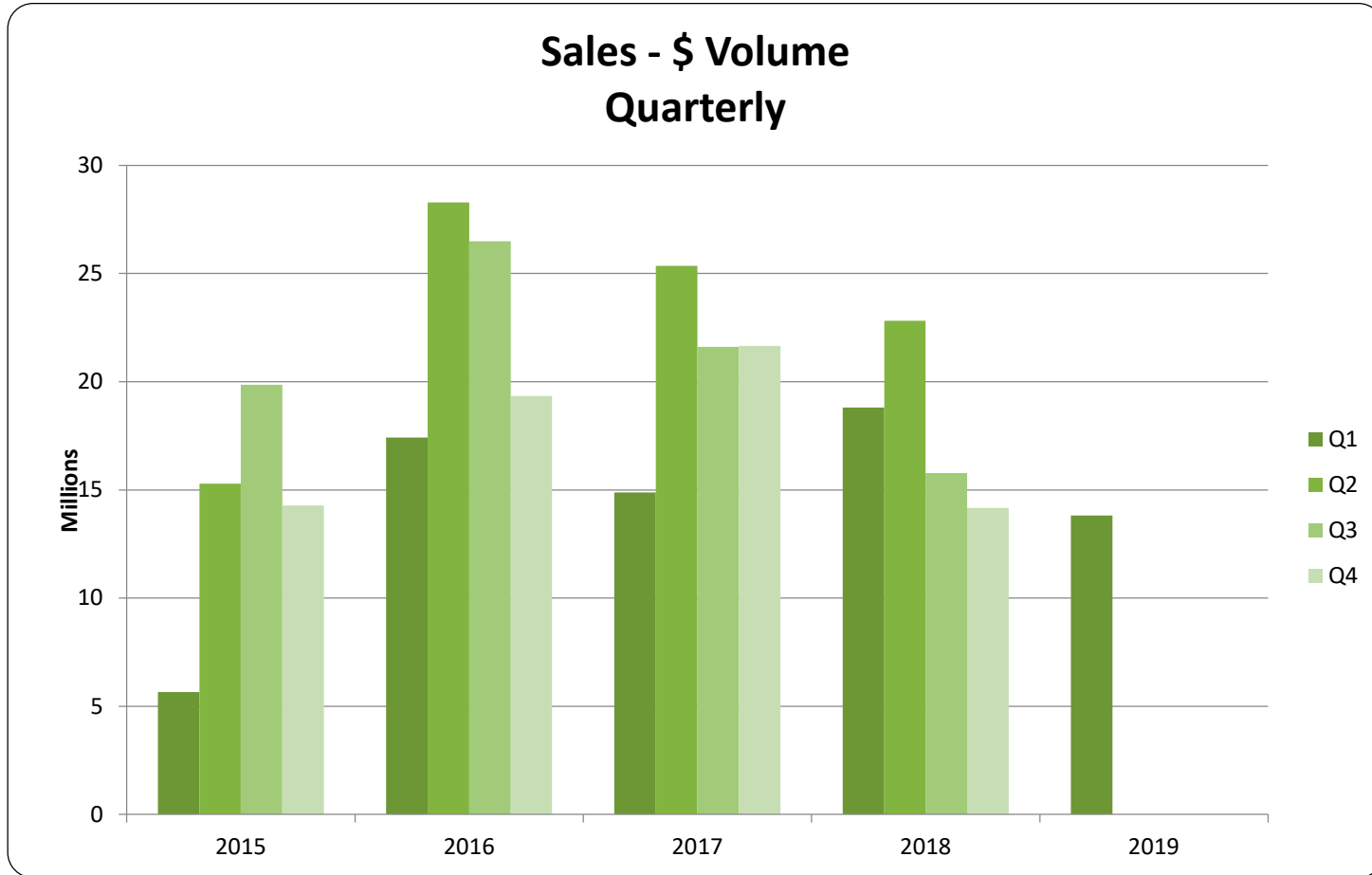
## \$ Average - Quarterly



Please note this chart does not indicate property value trends, only the average price of properties that actually sold for that quarter.

All sales information is derived from the Whistler Listing Service and is believed correct. E&OE

**May 2019**



## Sales - # of Transactions Quarterly

