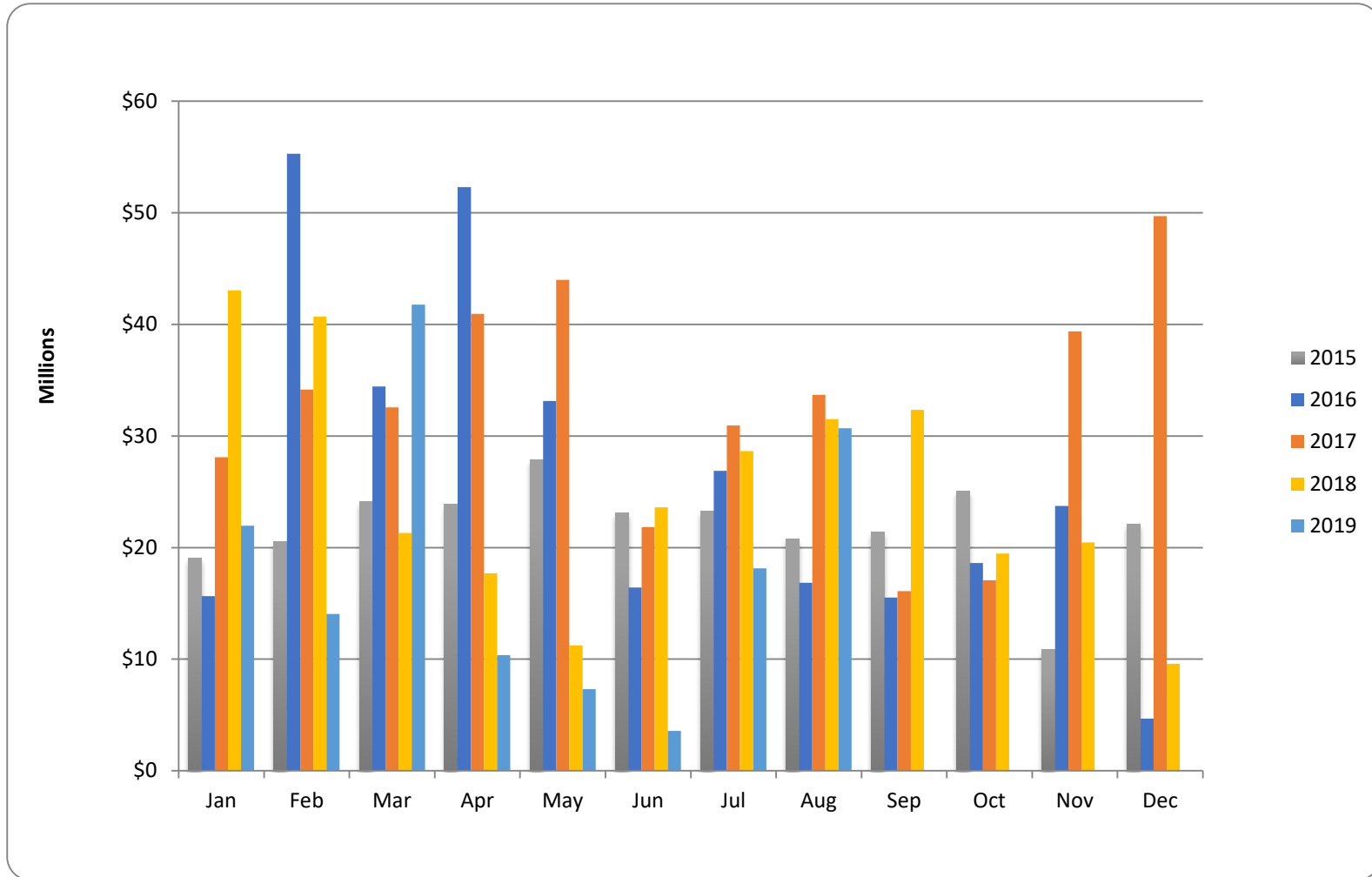




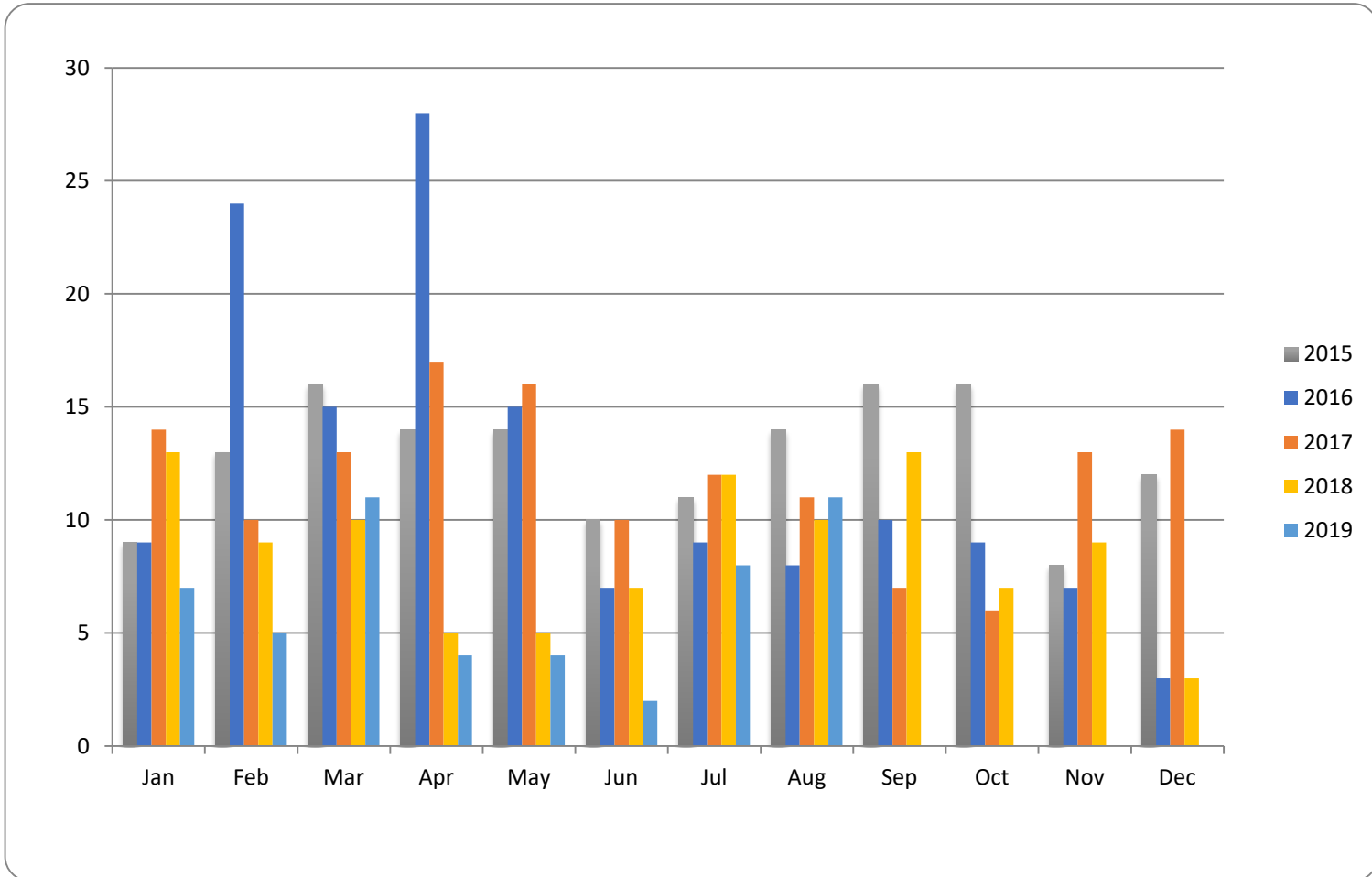
# Whistler Chalet Sales – Monthly \$





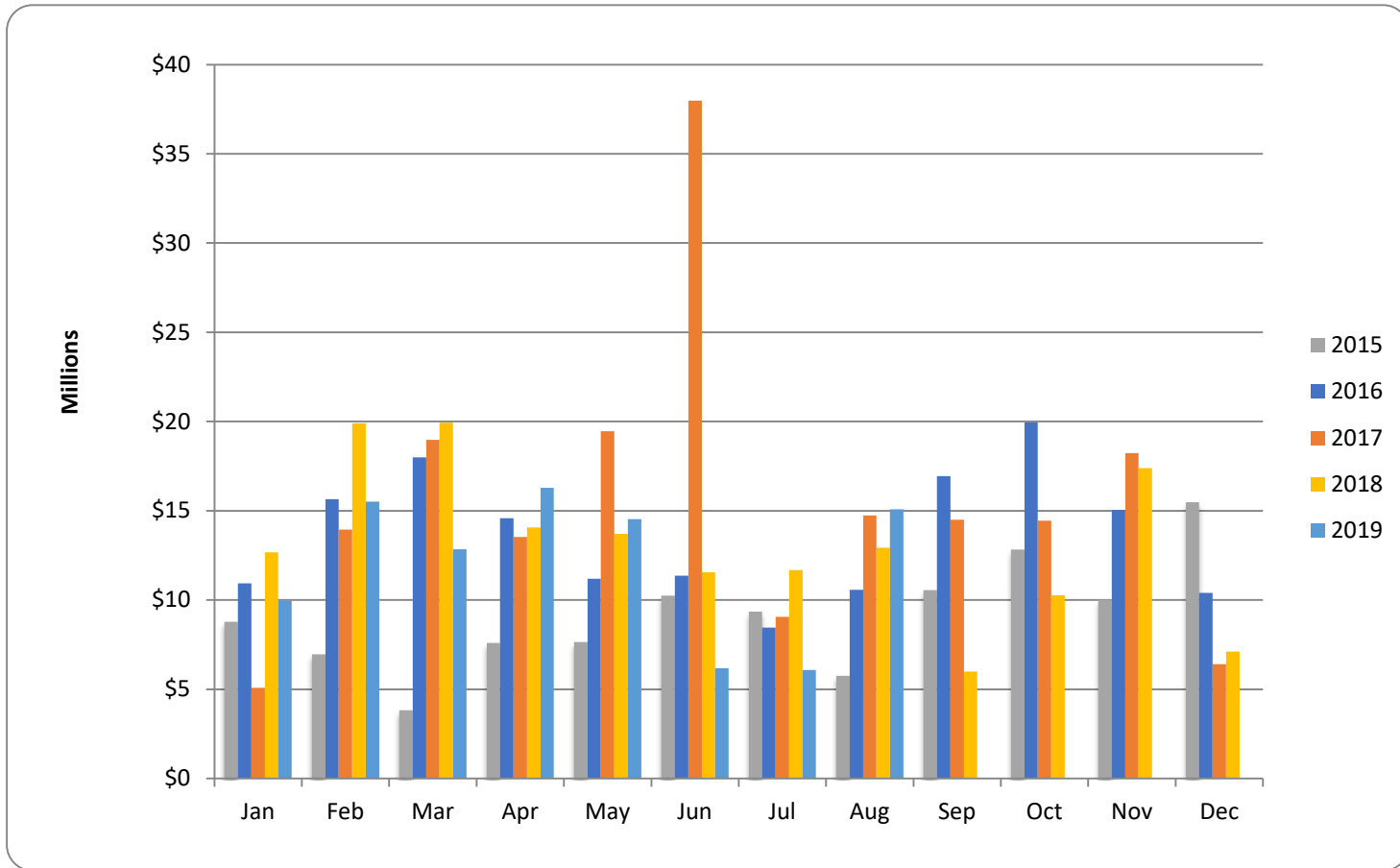
**RE/MAX**  
SEA TO SKY  
REAL ESTATE  
INDEPENDENTLY OWNED AND OPERATED

# Whistler Chalet Sales – Transactions





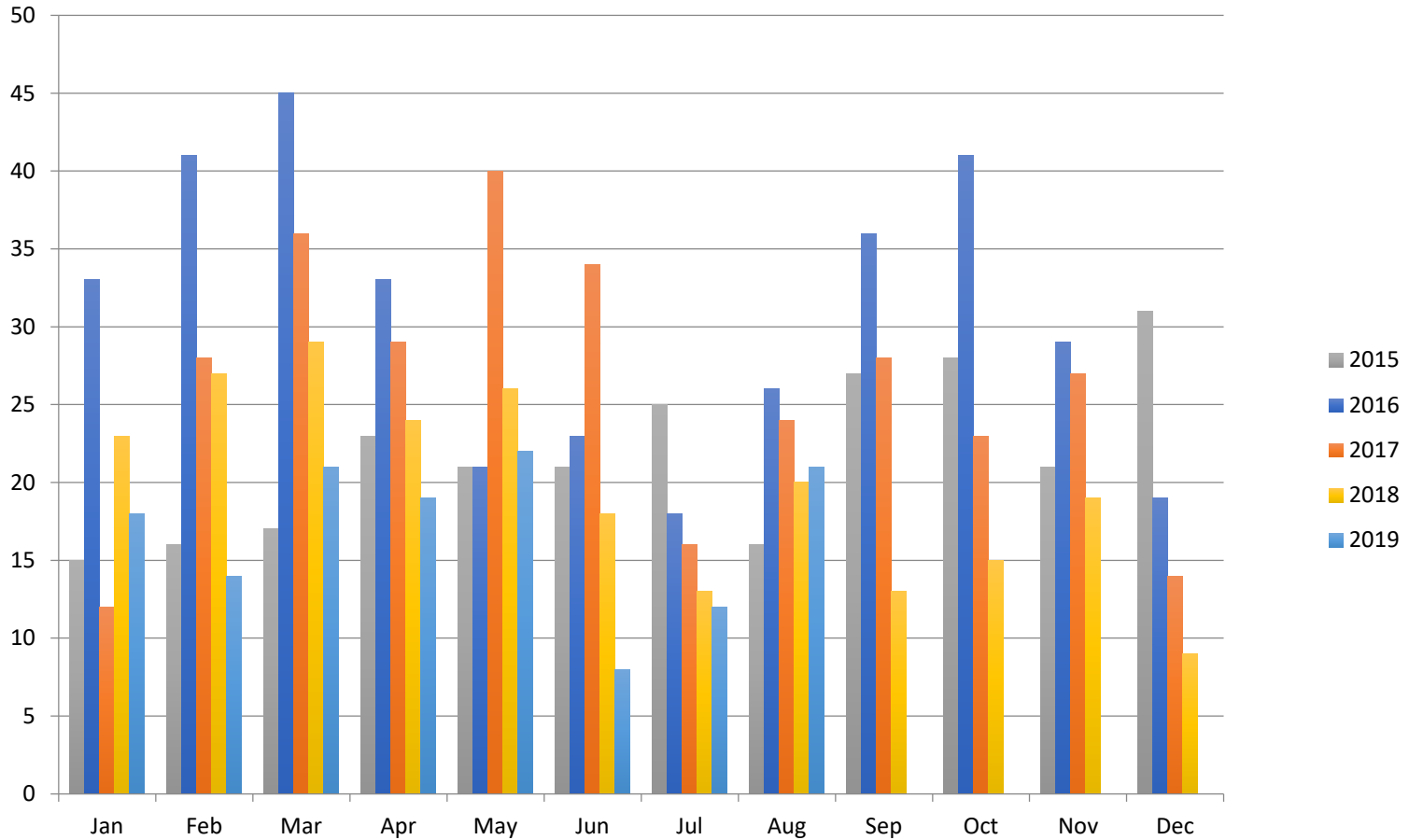
# Whistler Condos: All Types – \$ Volume





**RE/MAX**  
**SEA TO SKY**  
REAL ESTATE  
INDEPENDENTLY OWNED AND OPERATED

## Whistler Condos: All Types – # Transactions

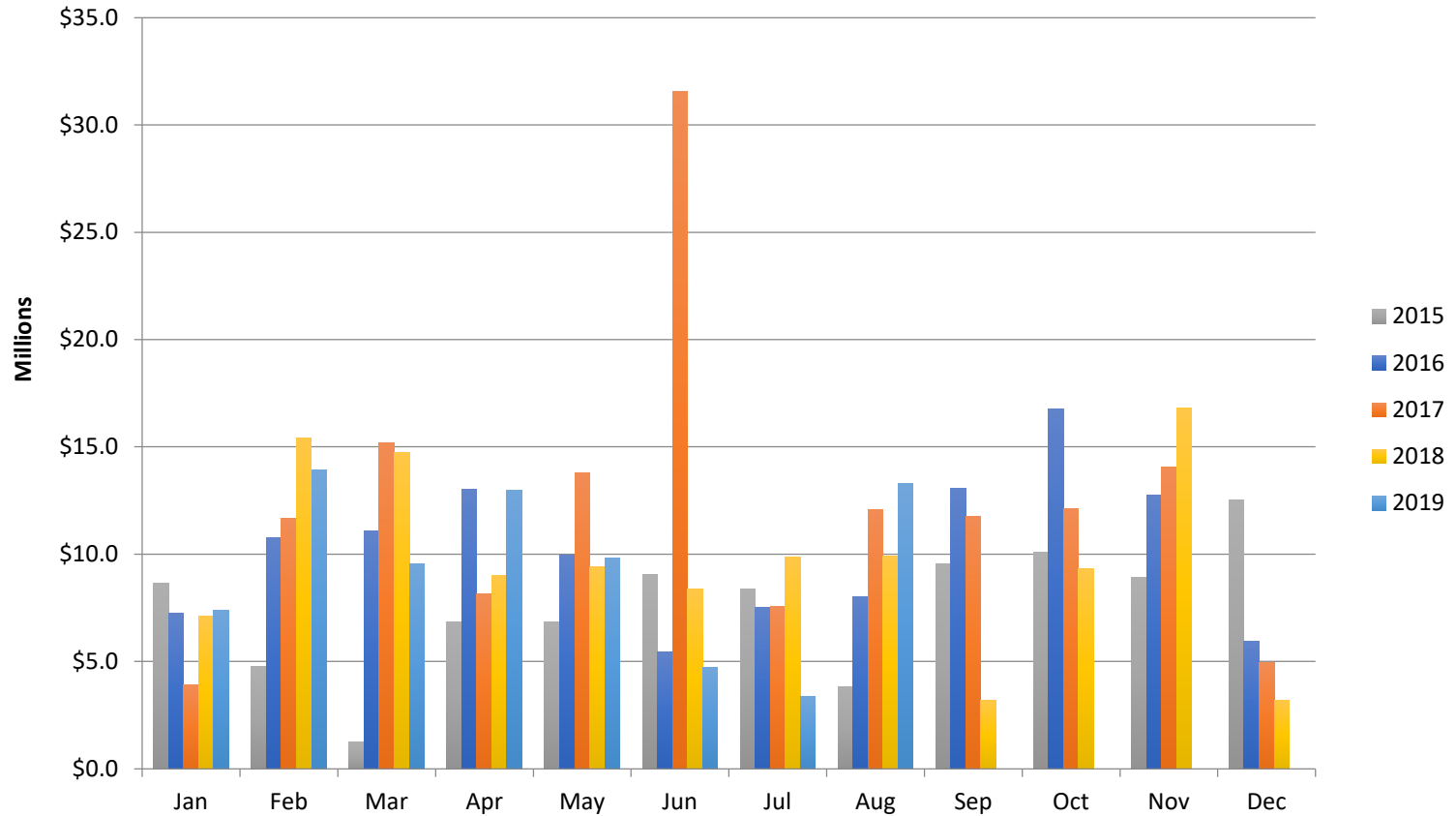


**August 2019**



**RE/MAX**  
SEA TO SKY  
REAL ESTATE  
INDEPENDENTLY OWNED AND OPERATED

# Whistler Condos: Phase I and Unrestricted – Monthly \$

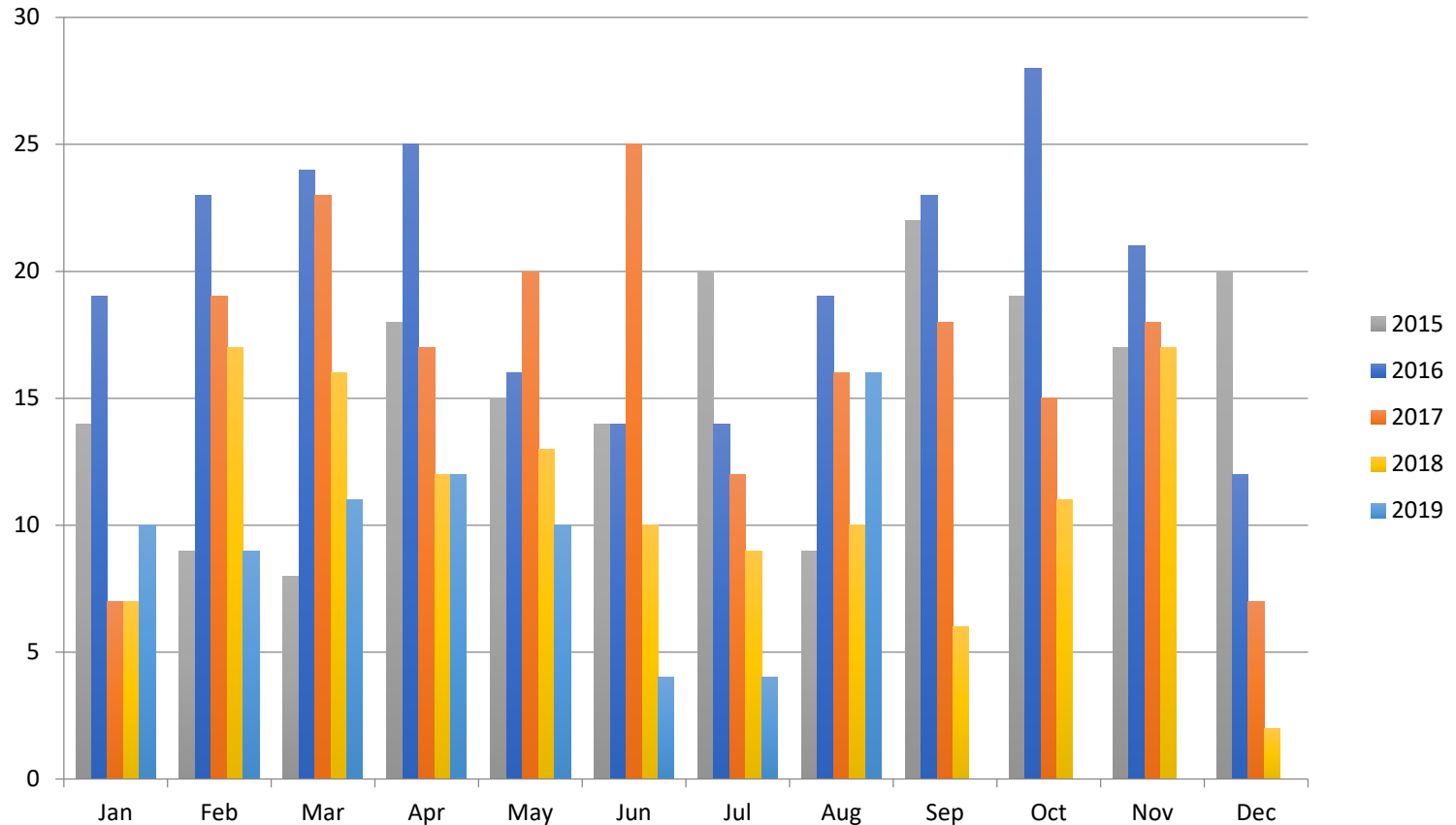


All sales information is derived from the Whistler Listing Service and is believed correct. E&OE

**August 2019**

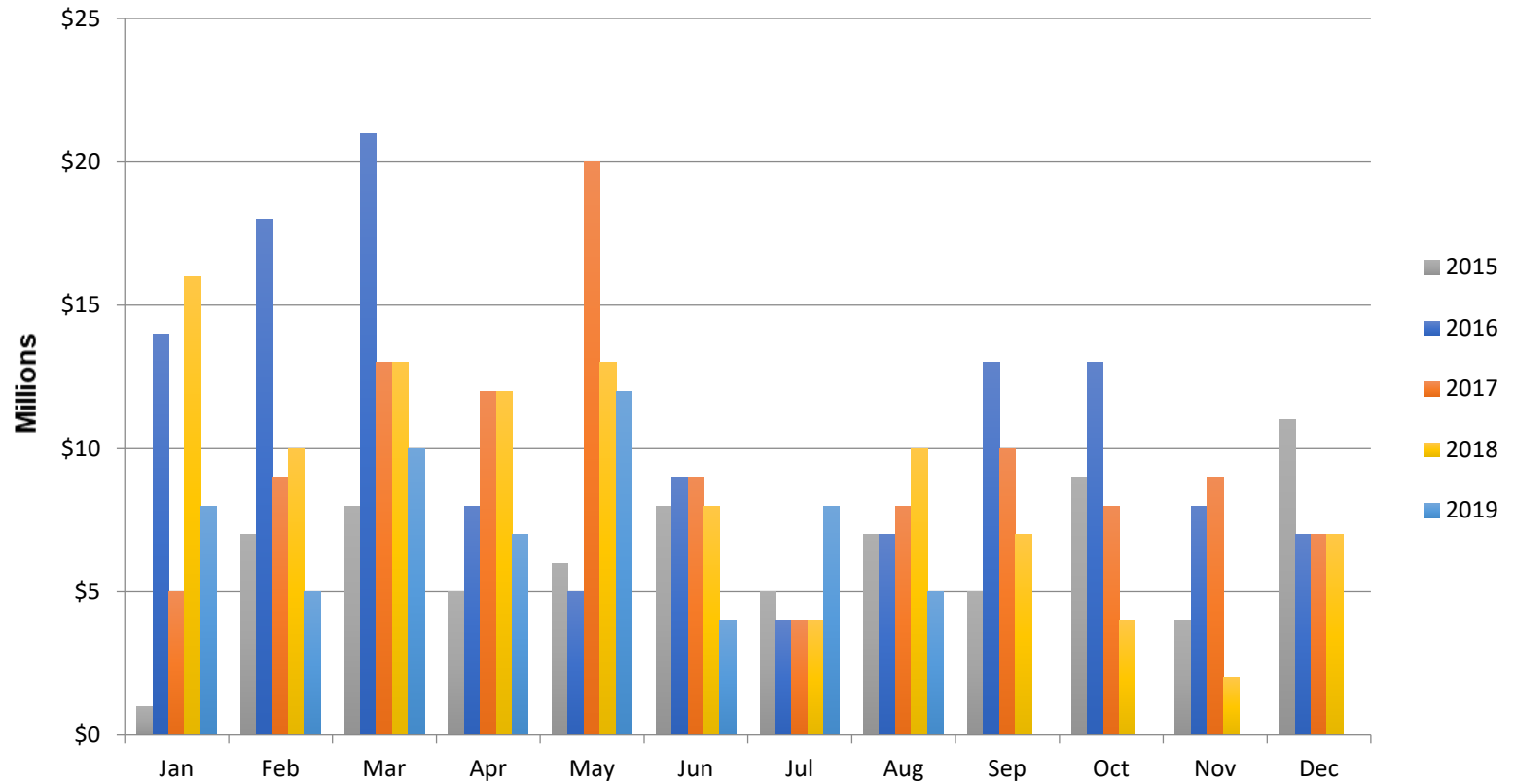


# Whistler Condos: Phase I and Unrestricted - Transactions



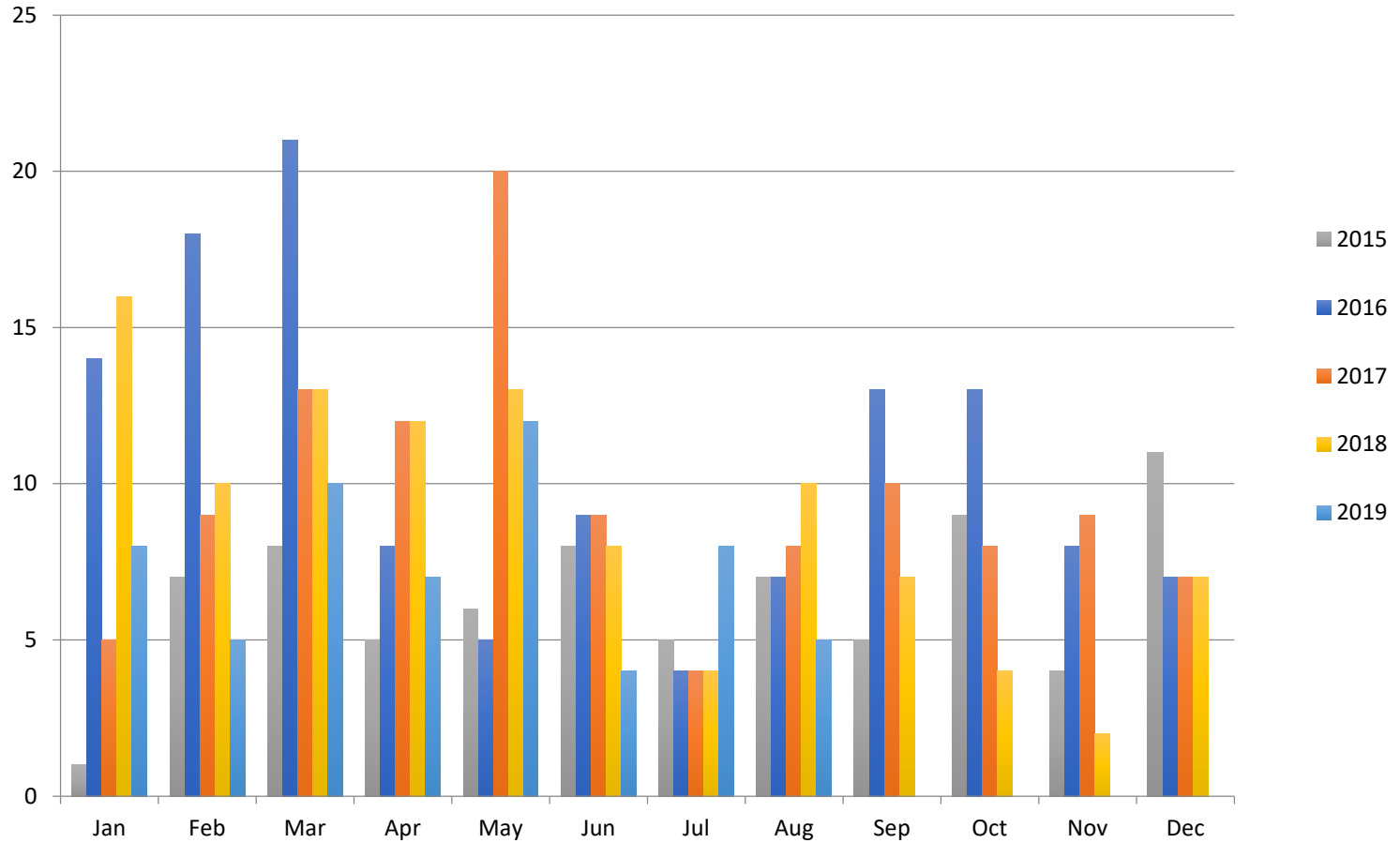


# Whistler Condos: Phase II – Monthly \$





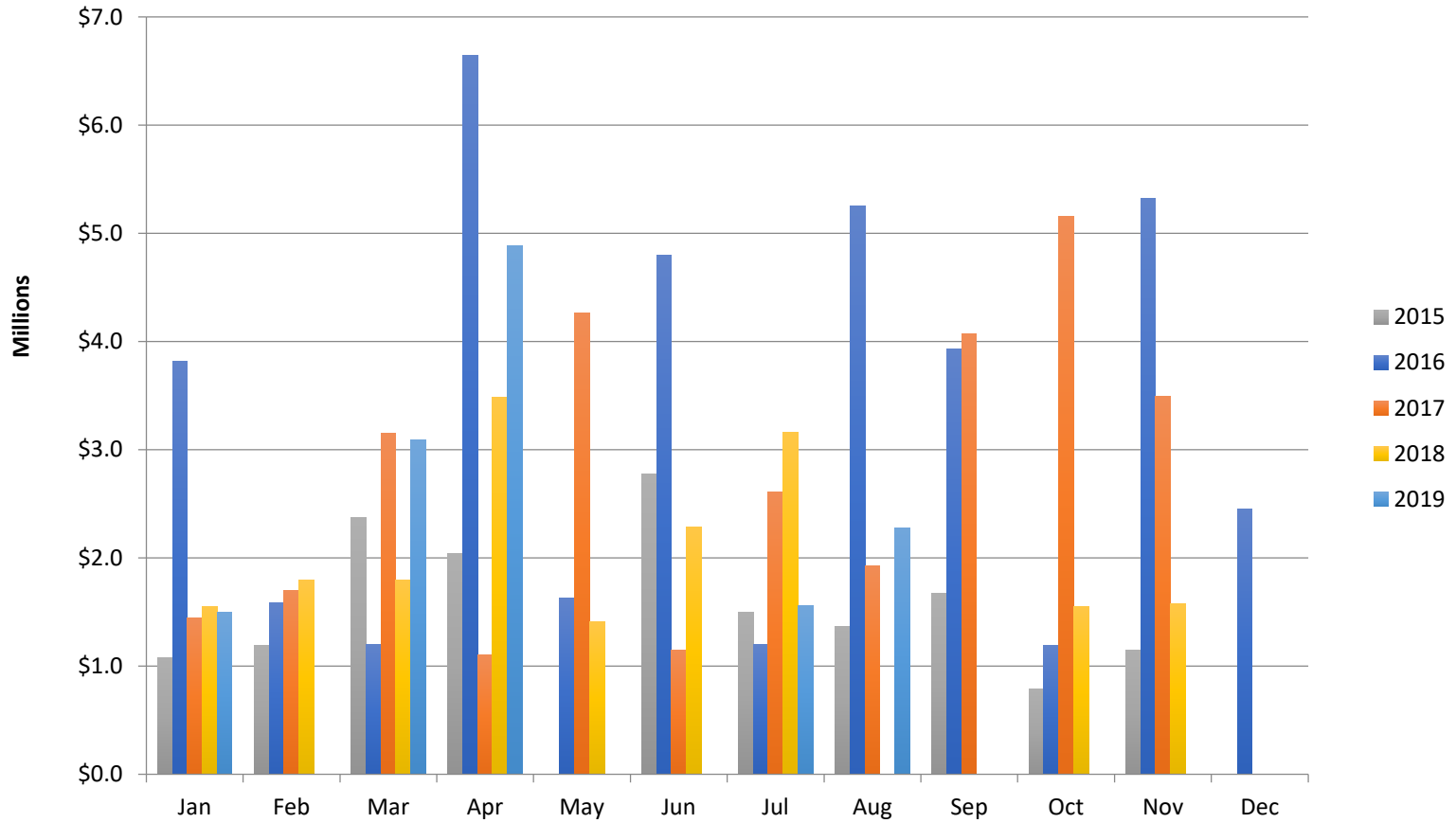
# Whistler Condos: Phase II – Transactions





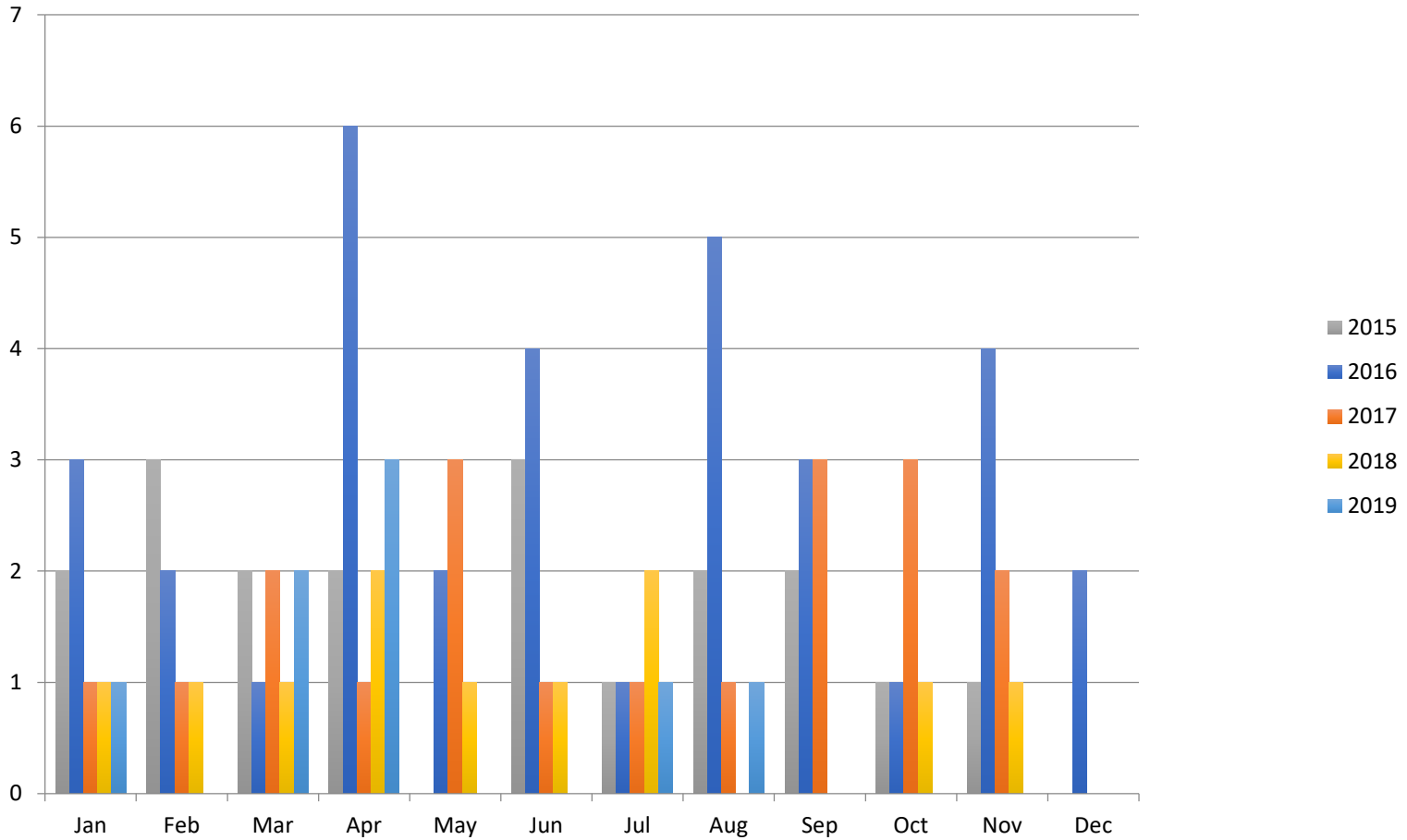


# Whistler Duplex Sales – Monthly \$





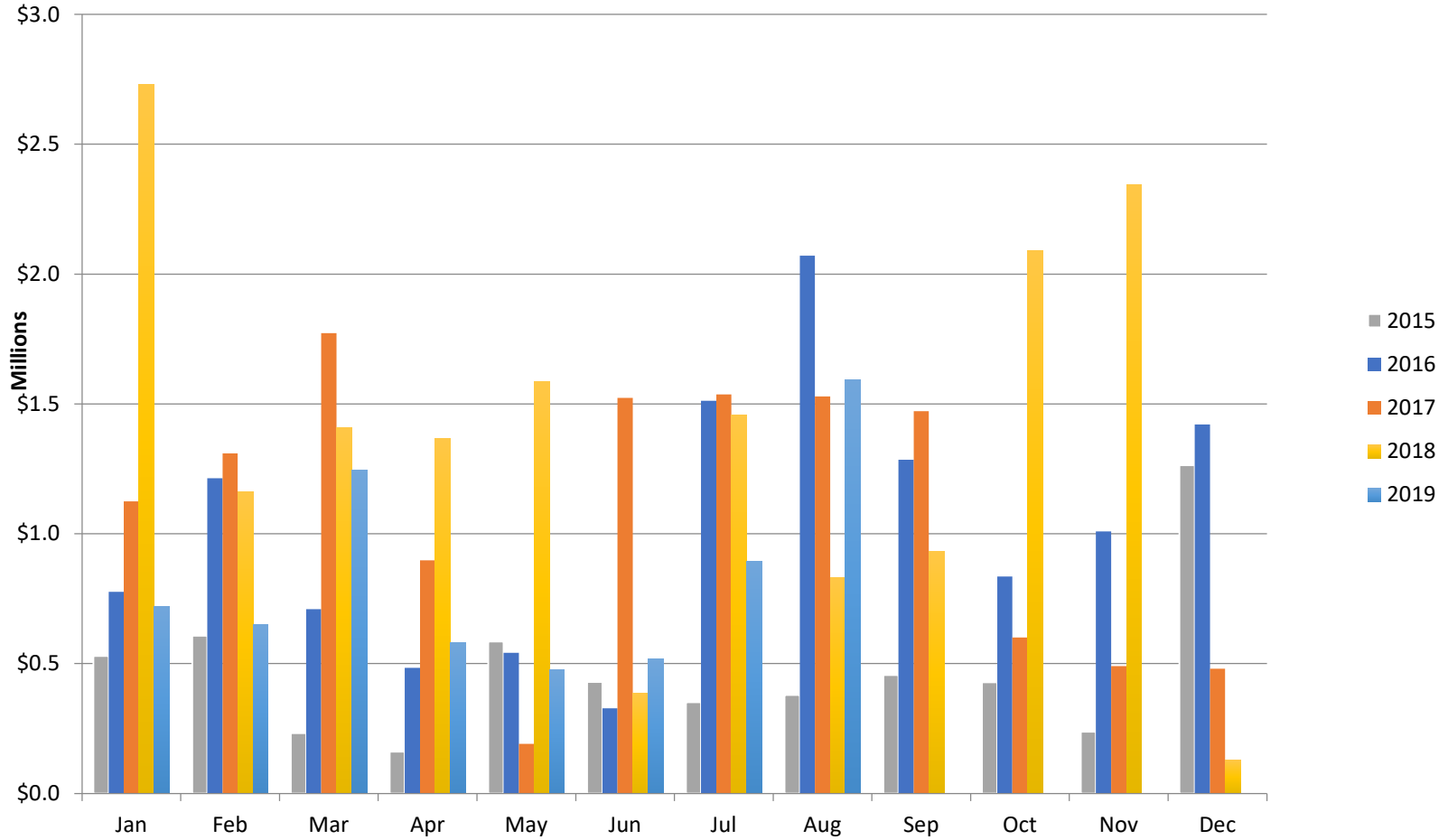
# Whistler Duplex Sales – Transactions





**RE/MAX**  
SEA TO SKY  
REAL ESTATE  
INDEPENDENTLY OWNED AND OPERATED

# Whistler Shared Owner Sales – Monthly \$



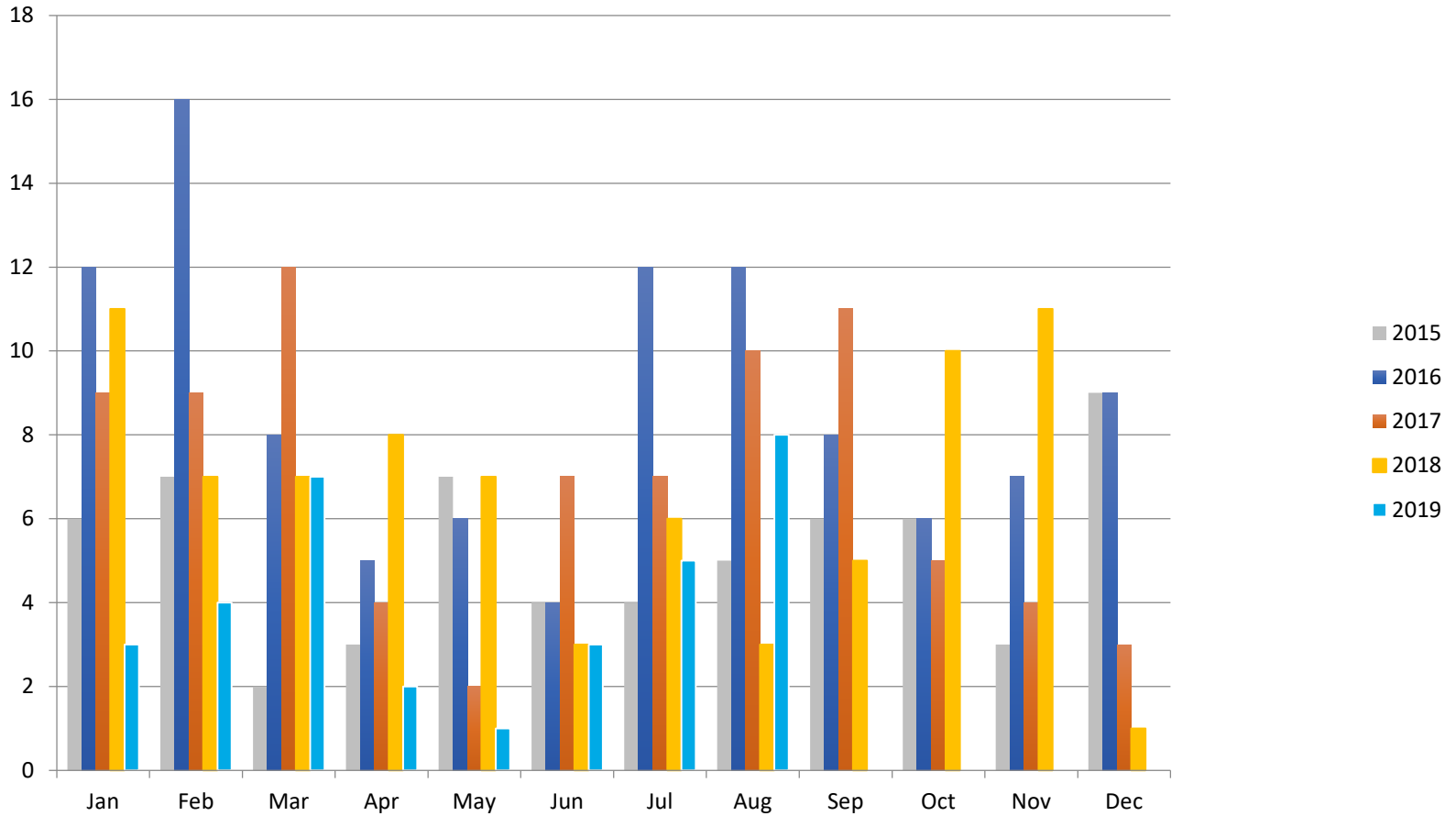
All sales information is derived from the Whistler Listing Service and is believed correct. E&OE

**August 2019**



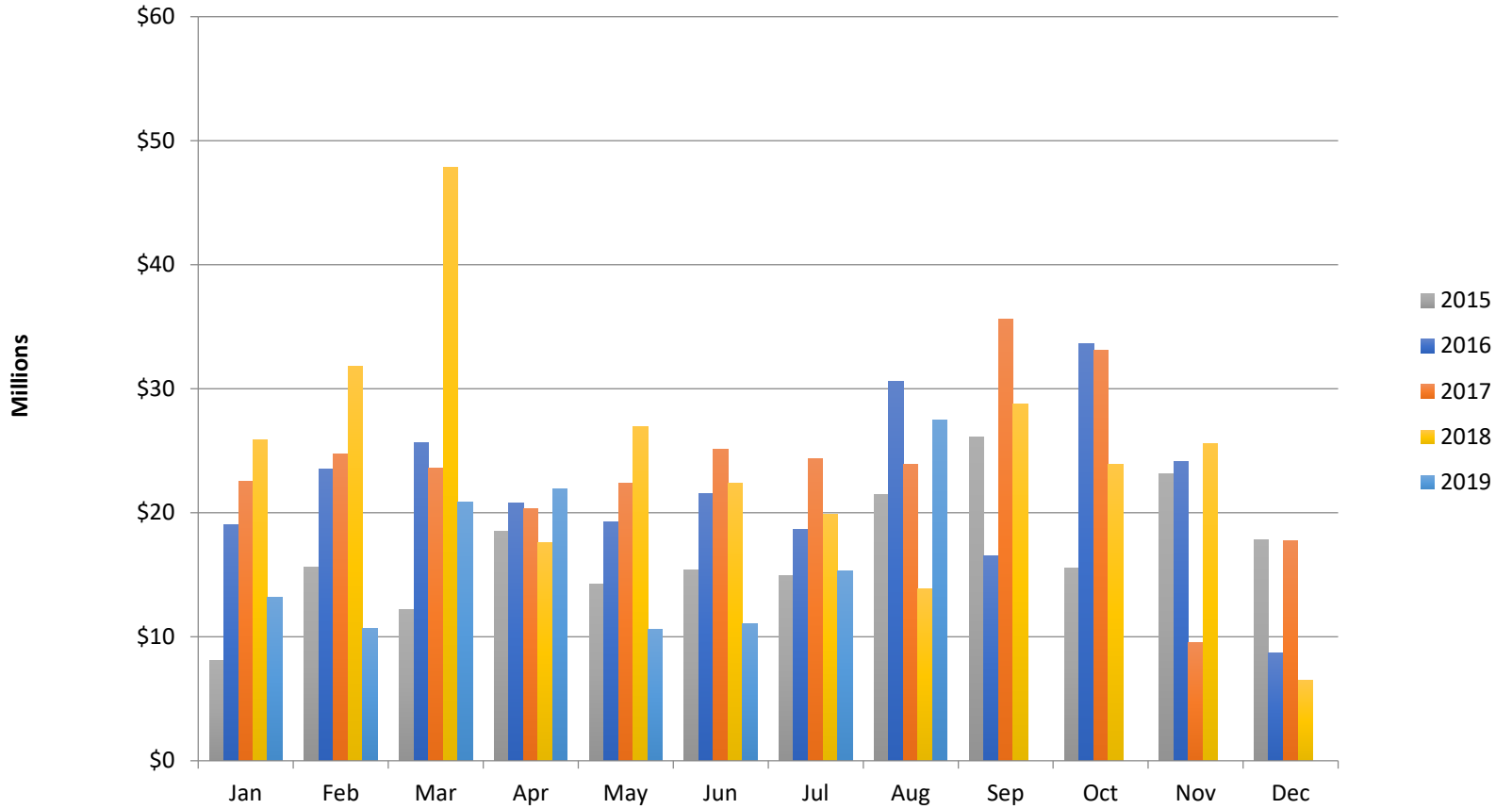
**RE/MAX**  
SEA TO SKY  
REAL ESTATE  
INDEPENDENTLY OWNED AND OPERATED

# Whistler Shared Owner Sales – Transactions





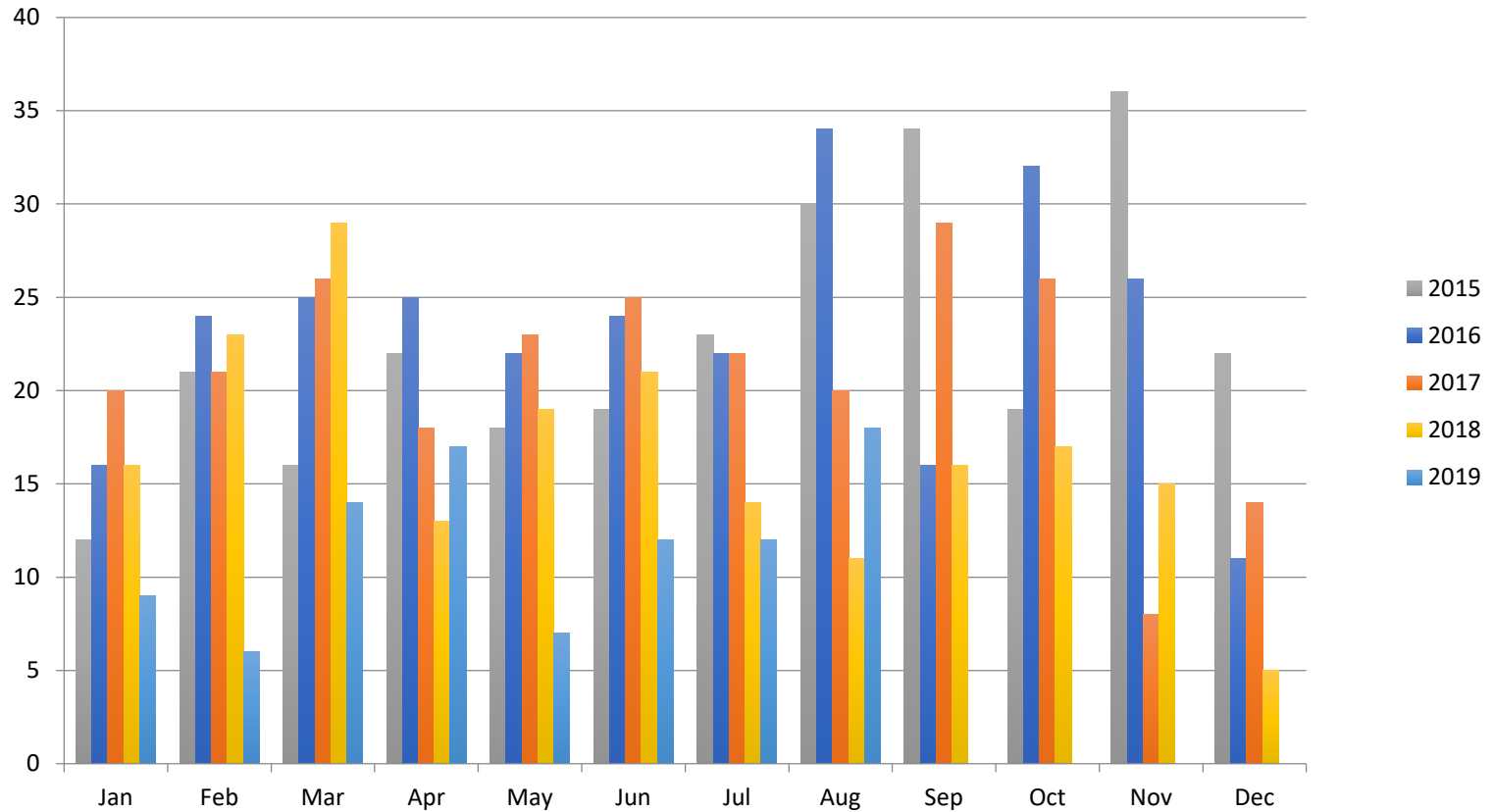
# Whistler Townhouse Sales – Monthly \$





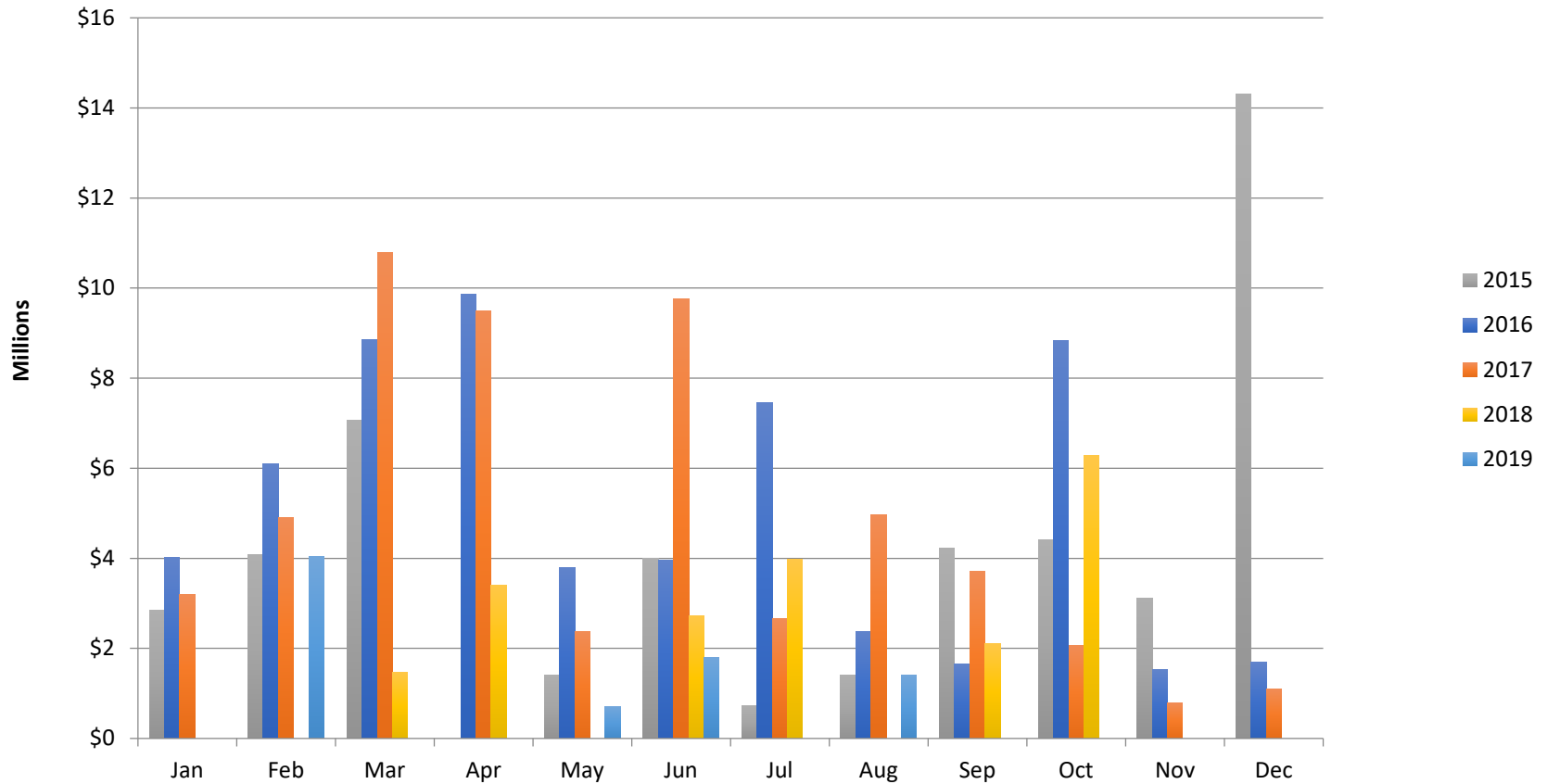
**RE/MAX**  
**SEA TO SKY**  
REAL ESTATE  
INDEPENDENTLY OWNED AND OPERATED

# Whistler Townhouse Sales – Transactions



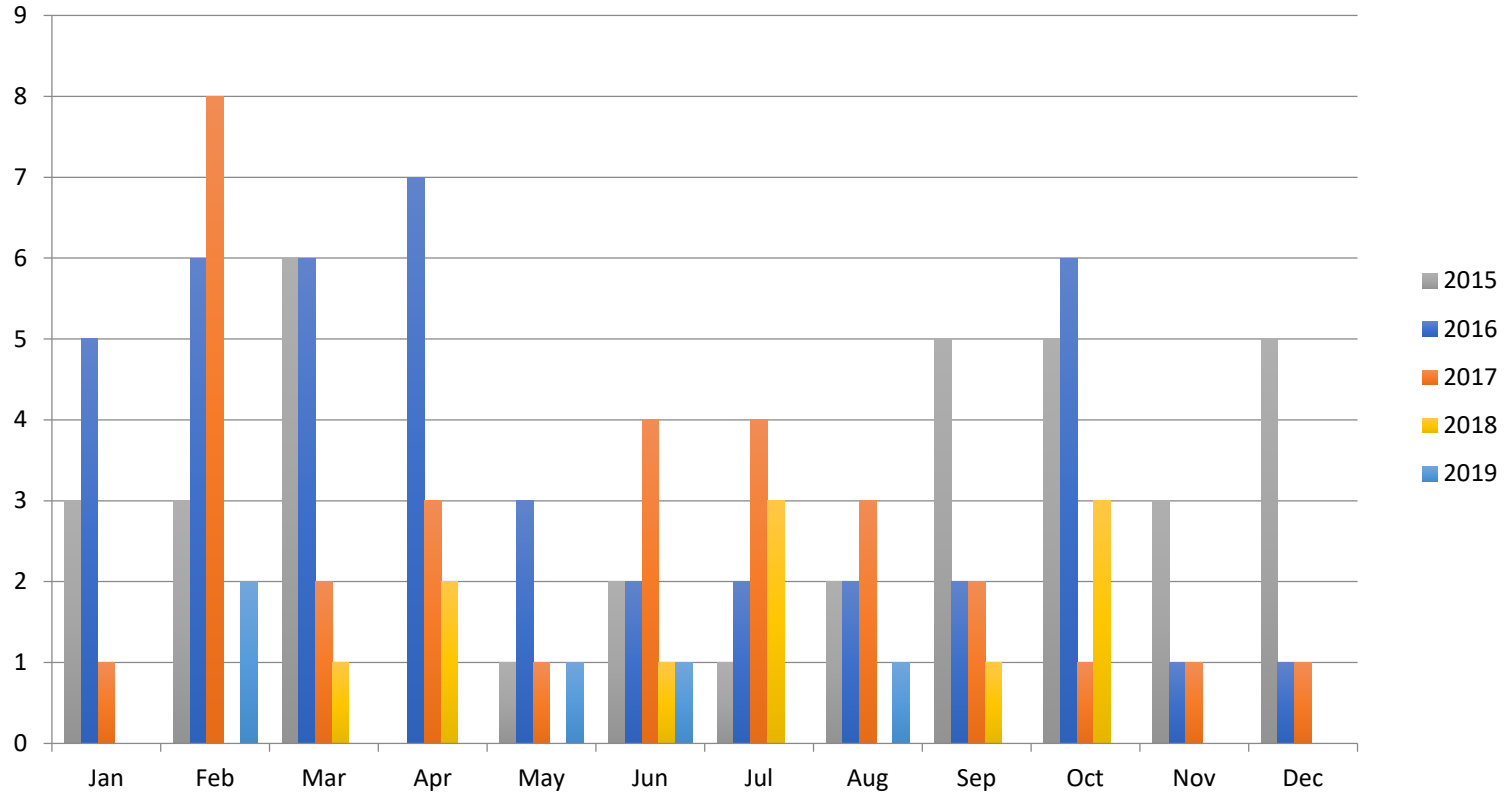


# Whistler Vacant Land Sales – Monthly \$





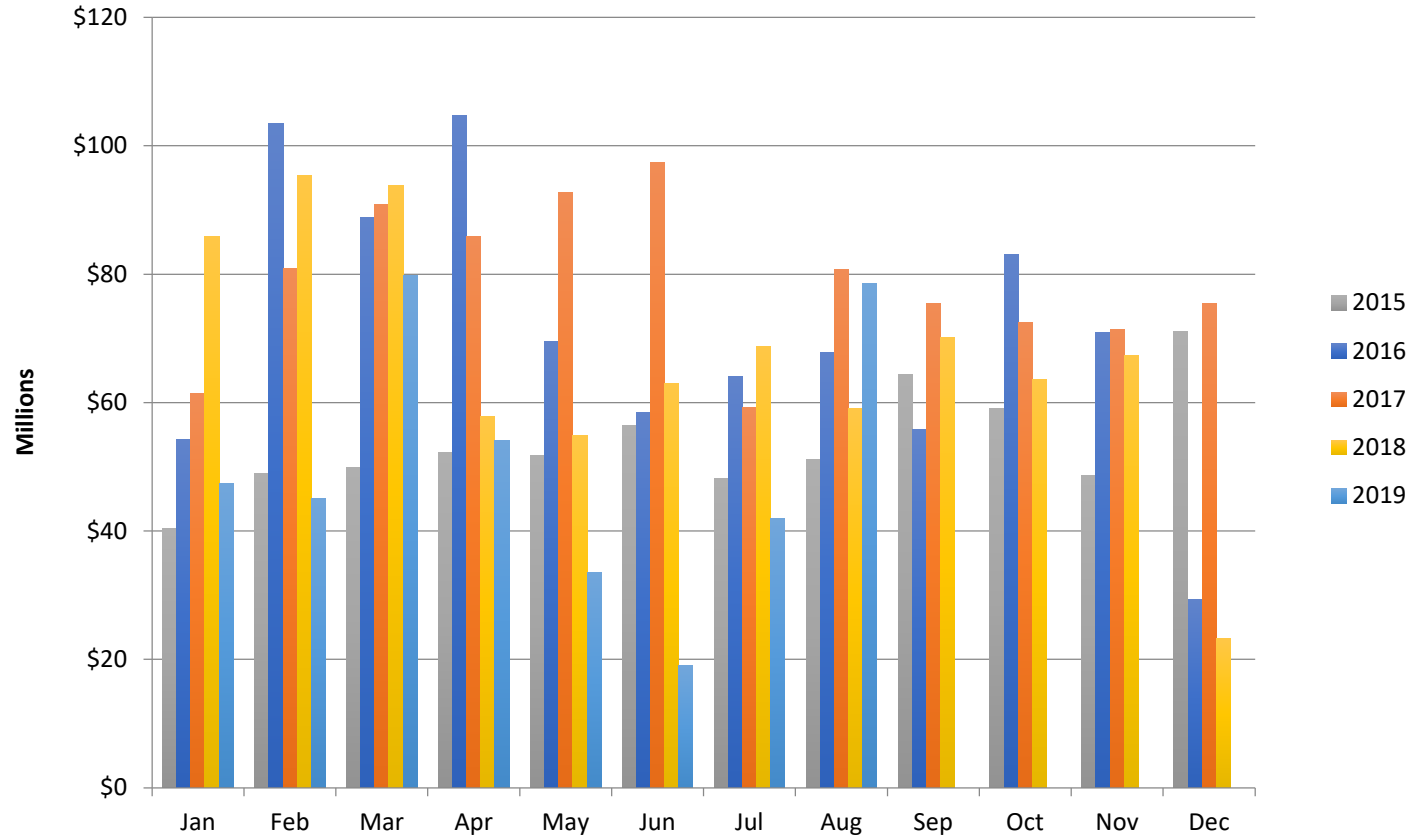
# Whistler Vacant Land Sales – Transactions





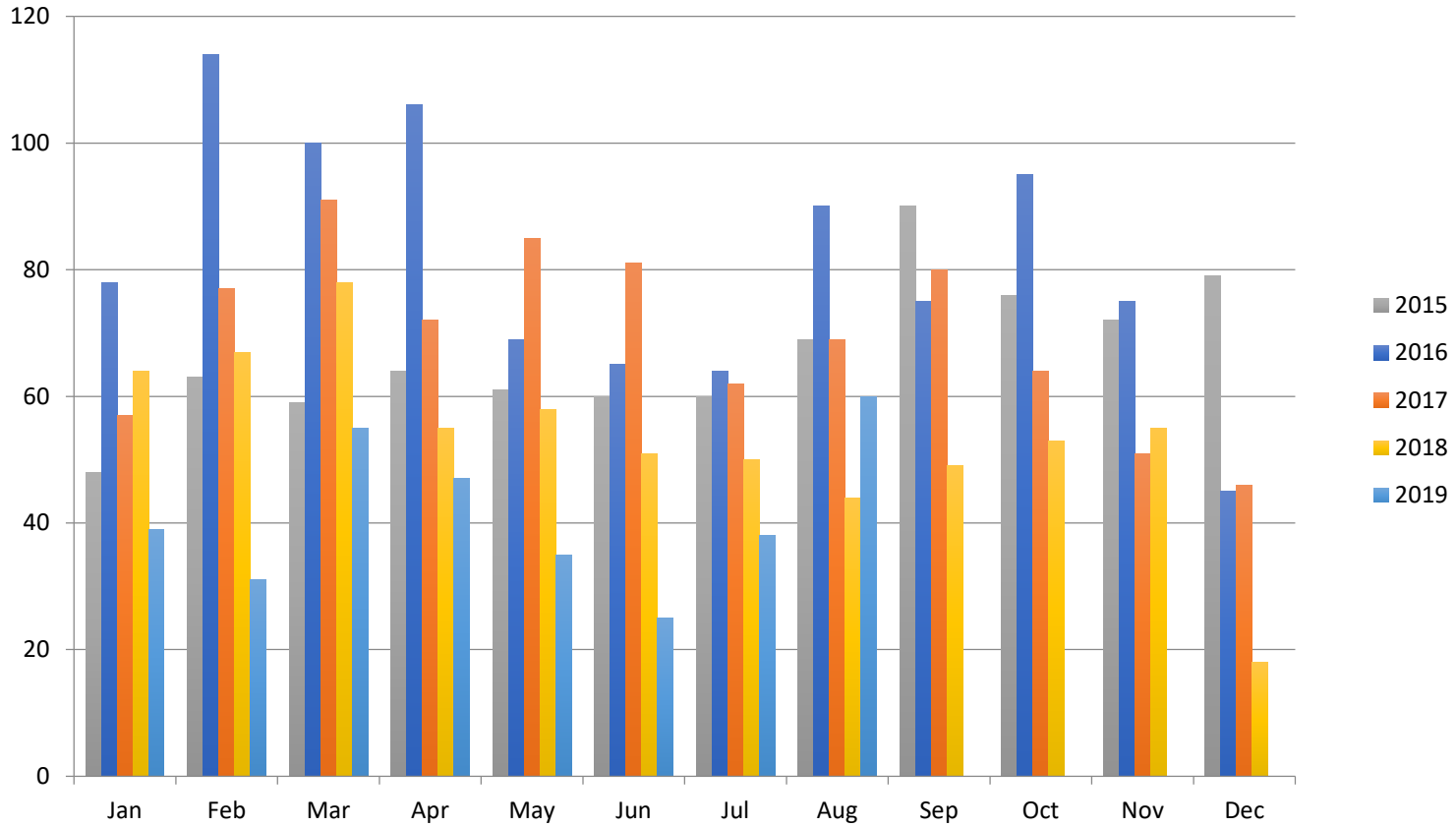


# Whistler Total Sales – Monthly \$





# Whistler Total Sales – Transactions

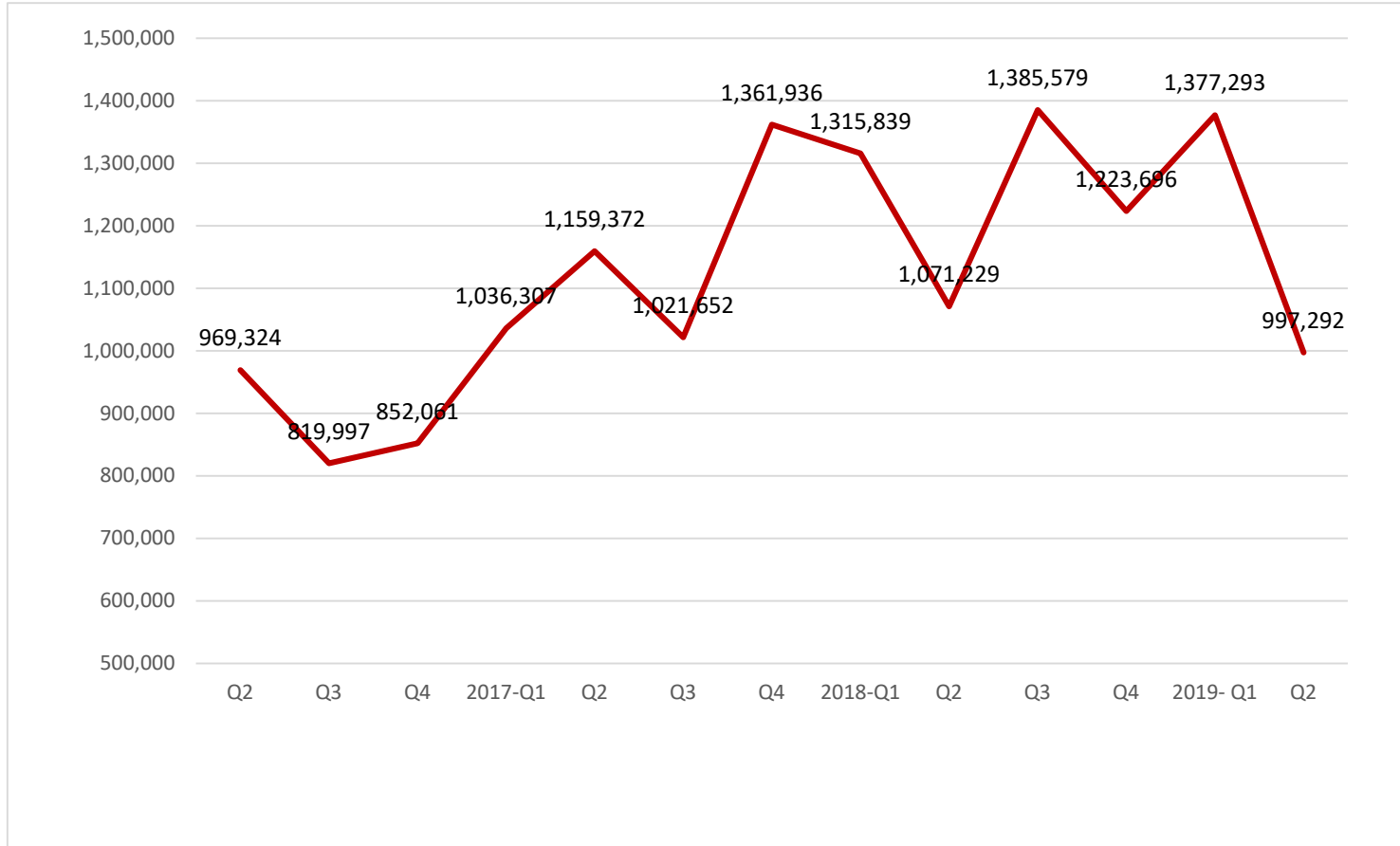


All sales information is derived from the Whistler Listing Service and is believed correct. E&OE

**August 2019**



# Average Sale Price by Quarter

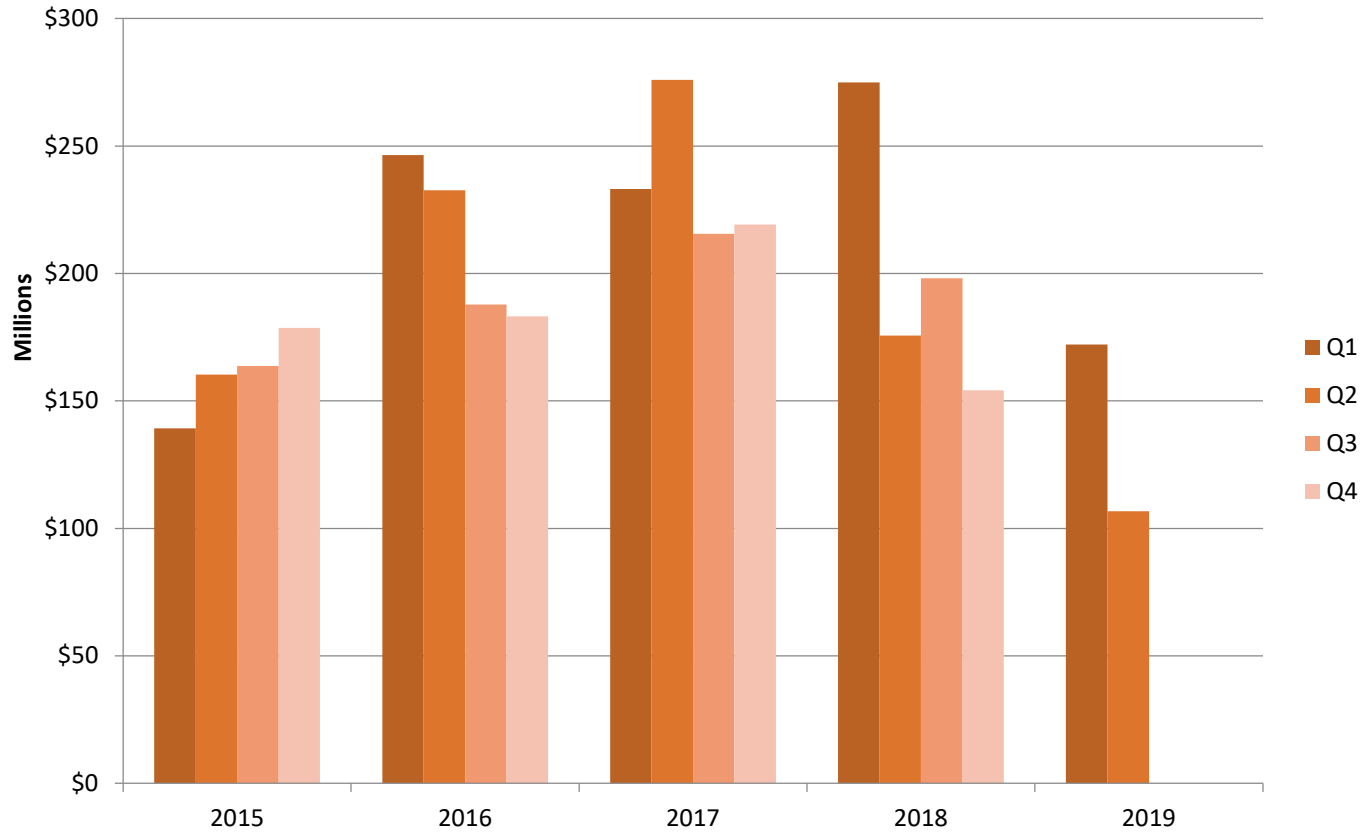


Please note this chart does not indicate property value trends, only the average price of properties that actually sold for that quarter.



**RE/MAX**  
**SEA TO SKY**  
REAL ESTATE  
INDEPENDENTLY OWNED AND OPERATED

## Sales - \$ Volume Quarterly



All sales information is derived from the Whistler Listing Service and is believed correct. E&OE

**August 2019**



## Sales - Units Quarterly

